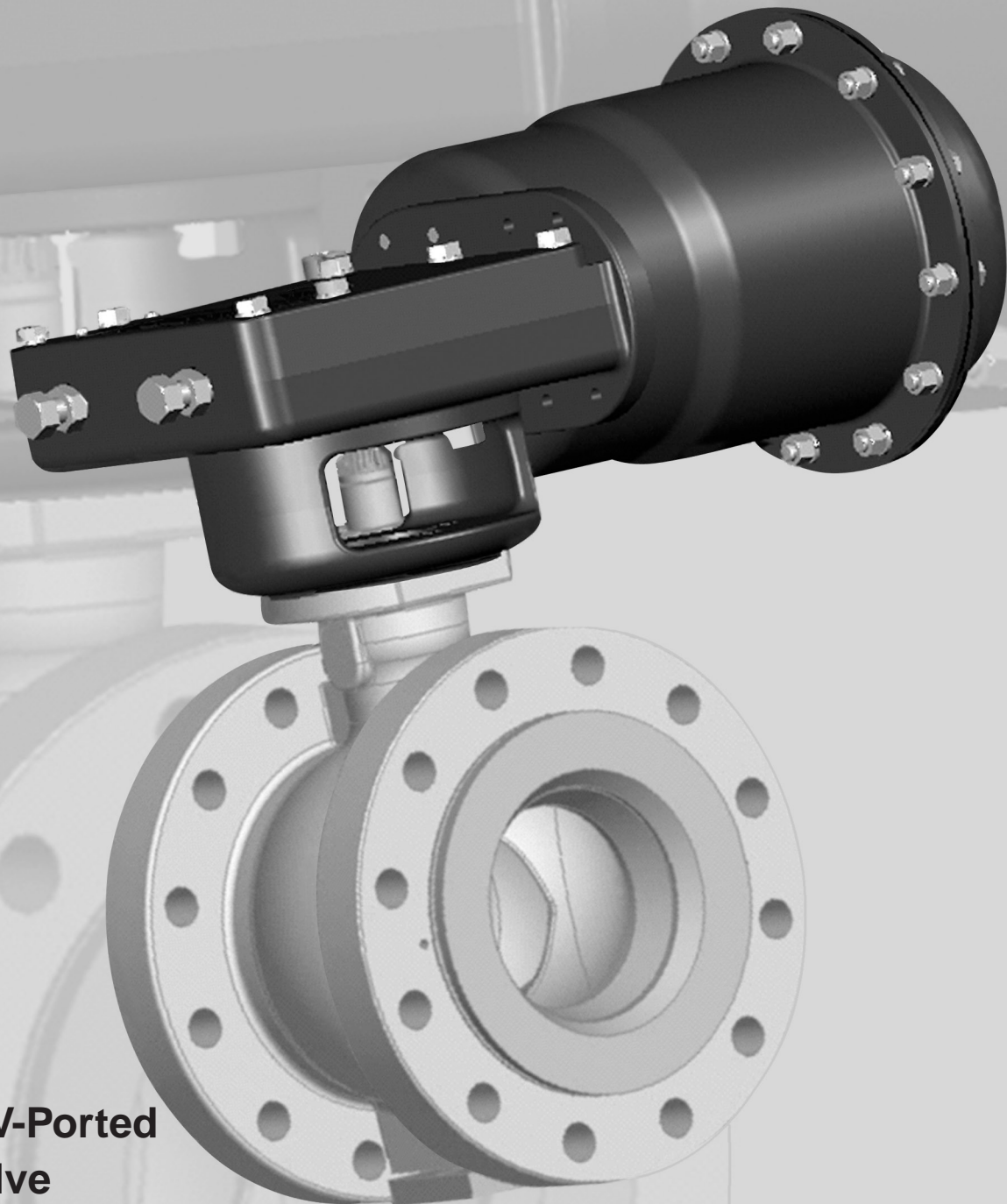


Masoneilan®
36005 Series V-Max®
High Capacity Control Ball Valves

Specification Data

CM36005

04/06



**High Capacity V-Ported
Control Ball Valve**



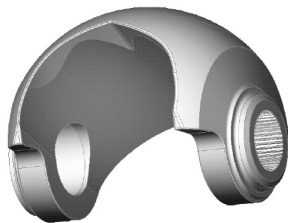
Table of Contents

Foreword.....	2
Numbering System.....	3
Actuator Mounting Guide.....	4
General Data.....	6
Seal Ring Temperature Limits.....	8
C_v and F_L vs Travel.....	9
Materials of Construction.....	10
Dimensions and Weights.....	14

Foreword

The V-Max® is a high capacity, heavy duty automatic throttling control ball valve incorporating the following features:

- Integrally cast ANSI 150 or 300 class raised face flanges. Eliminates long tie rods and simplifies alignment.
- Installation flexibility – Two face to face dimensions are available. Standard construction is in accordance with ISA S75.04 and IEC 534-3-2. Also available in ANSI B16.10 short pattern face to face dimensions – ANSI class 150 only.
- Straight through flow pattern provides exceptional capacities.
- Patented dual-characterized V-port ball combines an equal percentage flow characteristic with high capacities and greater than 500:1 rangeability.

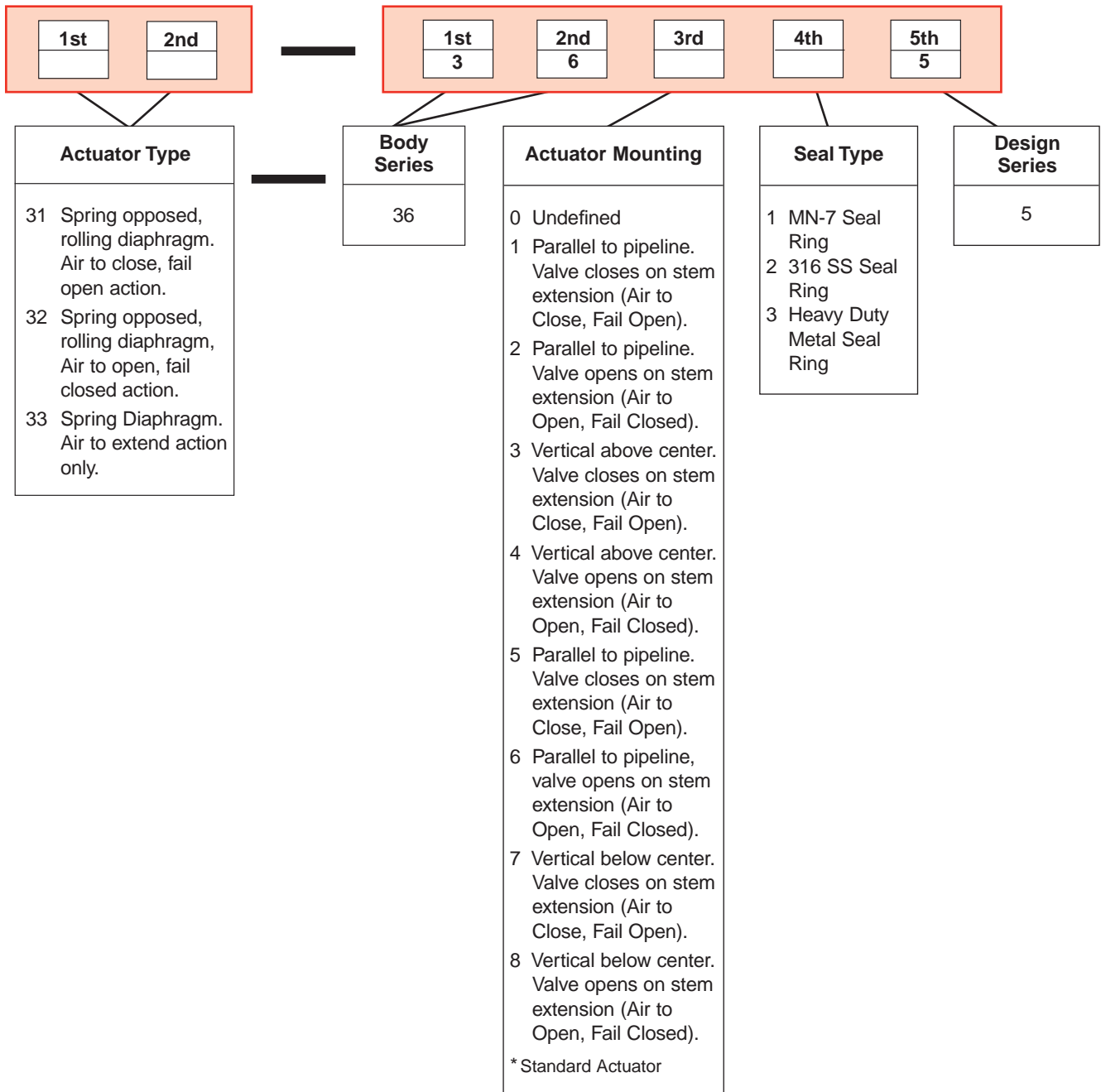


- Standard EF Seal (Emission Free) packing system provides long term, zero leakage† shaft sealing performance.
- MN-7 low-friction polymeric seal ring provides reliable Class VI shutoff.

- 316 Stainless Steel seal ring for Class IV shutoff and higher temperature capability when combined with satellite bearings and flexible graphite packing. Unique seal design requires no shims.
- Heavy Duty Seat provides longer service life in harsher applications. The wiping action of the seal ring against the ball prevents build up of contaminants maintaining long-term performance and reliable Class IV shutoff.
- Full involute spline connections on plug, shaft and actuator connections virtually eliminate backlash, providing reliable operation and ease of maintenance.
- Easy maintenance – The seal ring may be changed by simply removing two machine screws on the inlet flange. Actuator removal or complete valve disassembly is not required.

† Factory Mutual certified report

Numbering System



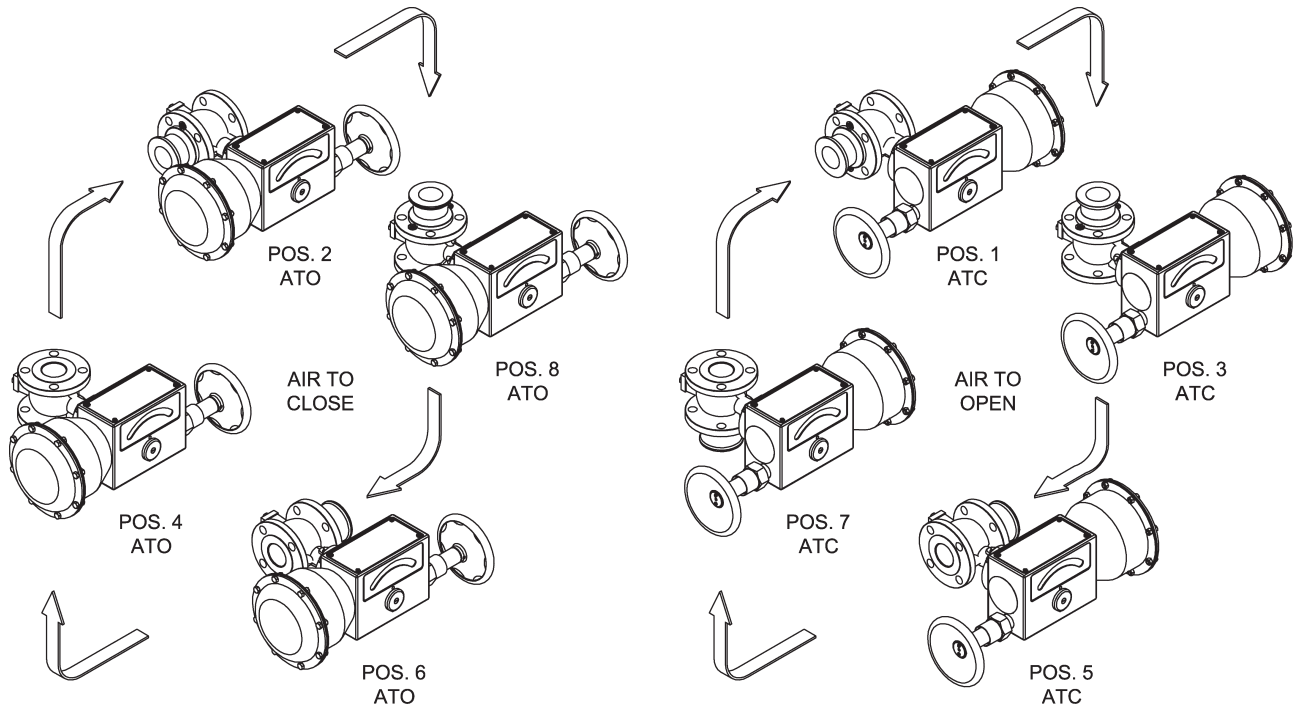
Actuator Mounting Guide

V-Max Valves

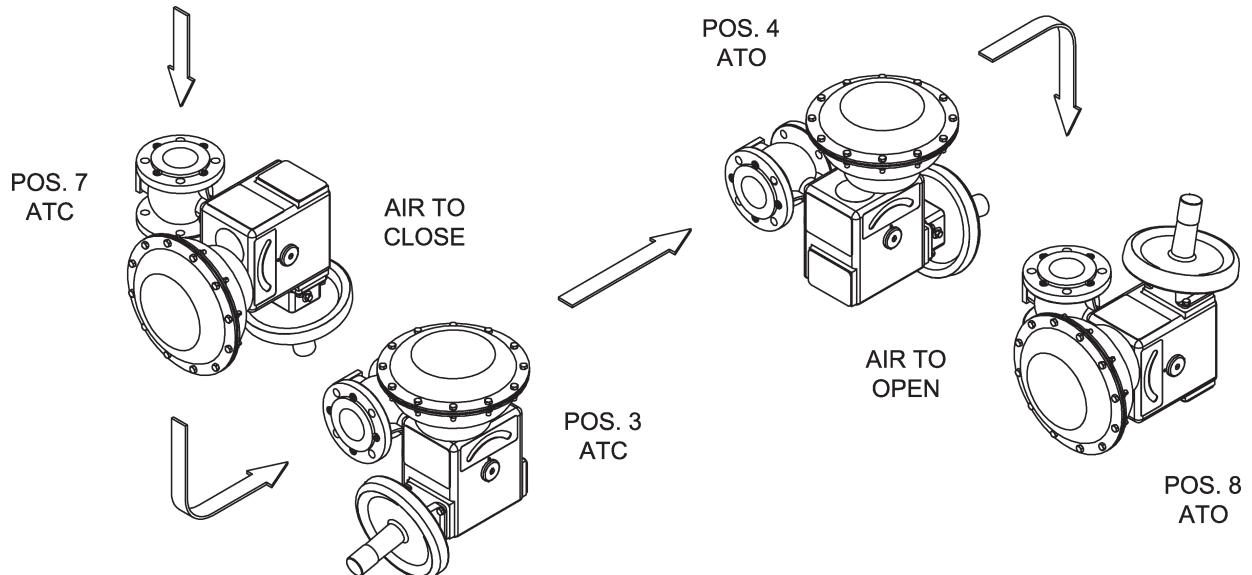
3 X - 3 6 X 0 5

Actuator position in Relation to Valve Body
Numbering System: 1 to 8

Actuator Model 33, Size AC



Actuator Model 33, Sizes B and C



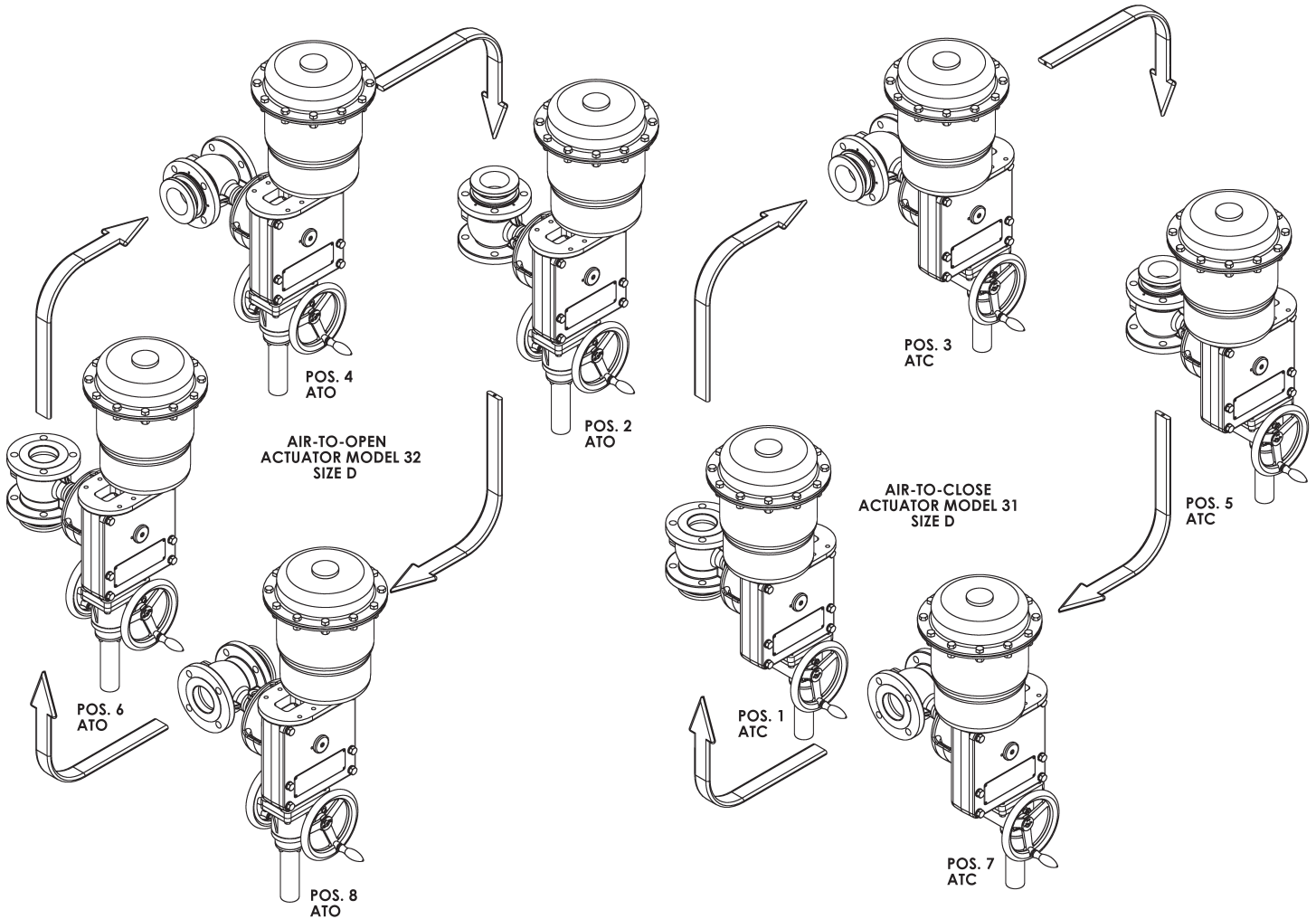
Actuator Mounting Guide

V-Max Valves

3 X - 3 6 X 0 5

Actuator position in Relation to Valve Body
Numbering System: 1 to 8

Actuator Model 31



General Data

Body

body type: cast with integral bonnet

flow direction: flow to open

materials: carbon steel

316 stainless steel

317 stainless steel

body pressure rating: ANSI 150 or 300 depending on flange rating

end connections: flanged – bolts to ANSI Class 150 or 300 rated

flanges (1" – 12") (DN 25 – 300)

Trim

plug type: dual characterized, high capacity "V" contoured segmented ball

material: 317 stainless steel, hard chrome plated

seat ring: MN-7, Standard Metal and Heavy Duty Metal

materials: MN-7 polymeric reinforced PTFE

316 stainless steel Standard Metal

Nitronic 60 Heavy Duty metal

retainer: 317 stainless steel

capacity: high capacity ball valve

flow characteristic: equal percentage

CV ratio: greater than 500:1

Actuators

Spring-Opposed Diaphragm – Model 33

size: AC 30 in² (194 cm²)

2.25" (57.2 mm) stroke

1"-2" valves (DN 25-50)

B 70 in² (452 cm²)

2.625" (66.5 mm) stroke

2"-4" valves (DN 50-100)

C 140 in² (903 cm²)

2.625" (66.5 mm) stroke

3"-12" valves (DN 80-300)

range: AC 7-15 psi

B 7-16 psi

C 9-16 psi

air connection: 1/4 NPT

yoke: cast iron

bearing: sealed radial ball

auxiliary handwheel: AC optional solid disk with locking nut

B rising stem push type

C rising stem push type

optional rising stem push type

Spring-Opposed Rolling Diaphragm – Model 31/32

size: D 60 in² (387 cm²)

4.00" (101.6 mm) stroke

3"-12" valves (DN 80-300)

range: D 12-28 psi

17-40 psi

29-68 psi

air connection: 1/4 NPT

yoke: cast iron

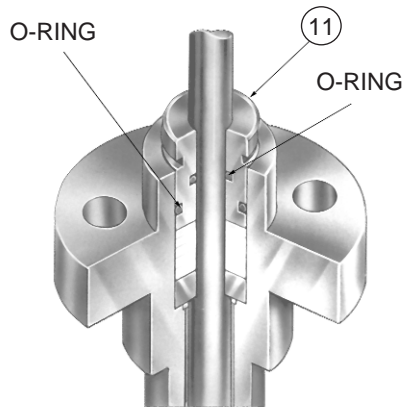
bearing: sealed radial ball

manual override: option jackscrew gear

General Data

Standard Actuator Characteristics

Valve Size		Shaft Diameter		Actuator										
				Model	Size		Spring Range		Effective Area		Actuator Stroke		Handwheel Diameter	
					Standard	Oversized	psi	bar	Sq. in.	Sq. cm	in.	mm	in.	mm
1	25	0.62	15.7	33	AC		7-15	.48-1.03	30	194	2.250	57.2	6.5	165
1-1/2	40	0.62	15.7	33	AC		7-15	.48-1.03	30	194	2.250	57.2	6.5	165
2	50	0.62	15.7	33	AC		7-15	.48-1.03	30	194	2.250	57.2	6.5	165
		0.62	23.7	33		B	7-16	.48-1.10	70	452	2.625	66.5	10	254
3	80	0.93	23.7	33	B		7-16	.48-1.10	70	452	2.625	66.5	10	254
		0.93	23.7	33		C	9-16	.62-1.10	140	903	2.625	66.5	10	254
4	100	0.93	23.7	33	B		7-16	.48-1.10	70	452	2.625	66.5	10	254
		0.93	23.7	33		C	9-16	.62-1.10	140	903	2.625	66.5	10	254
6	150	1.2	30.5	33	C		9-16	.62-1.10	140	903	2.625	66.5	10	254
		1.2	30.5	31/32		D	12-28	.83-1.93	60	387	4.000	101.6	8	203
		1.2	30.5	31/32		D	17-40	1.17-2.76	60	387	4.000	101.6	8	203
		1.2	30.5	31/32		D	29-68	2.00-4.69	60	387	4.000	101.6	8	203
8	200	1.2	30.5	33	C		9-16	.62-1.10	140	903	2.625	66.5	10	254
		1.2	30.5	31/32		D	12-28	.83-1.93	60	387	4.000	101.6	8	203
		1.2	30.5	31/32		D	17-40	1.17-2.76	60	387	4.000	101.6	8	203
		1.2	30.5	31/32		D	29-68	2.00-4.69	60	387	4.000	101.6	8	203
10	250	1.37	34.8	33	C		9-16	.62-1.10	140	903	2.625	66.5	10	254
		1.37	34.8	31/32		D	12-28	.83-1.93	60	387	4.000	101.6	8	203
		1.37	34.8	31/32		D	17-40	1.17-2.76	60	387	4.000	101.6	8	203
		1.37	34.8	31/32		D	29-68	2.00-4.69	60	387	4.000	101.6	8	203
12	300	1.37	34.8	33	C		9-16	.62-1.10	140	903	2.625	66.5	10	254
		1.37	34.8	31/32		D	12-28	.83-1.93	60	387	4.000	101.6	8	203
		1.37	34.8	31/32		D	17-40	1.17-2.76	60	387	4.000	101.6	8	203
		1.37	34.8	31/32		D	29-68	2.00-4.69	60	387	4.000	101.6	8	203



Provides long term reliable extremely low emission shaft seal performance. This economical solution to fugitive emissions won't compromise control performance and is suitable for use in environmentally sensitive applications.

† Factory Mutual certified report

Standard V-Max Packing Arrangement
EF Seal (Emission Free) Double O-Ring Seal Packing Follower
 Fugitive Emission Containment Package for Zero Leakage†

Temperature / Seat Leakage

Standard Metal Seal Ring Temperature Limitations

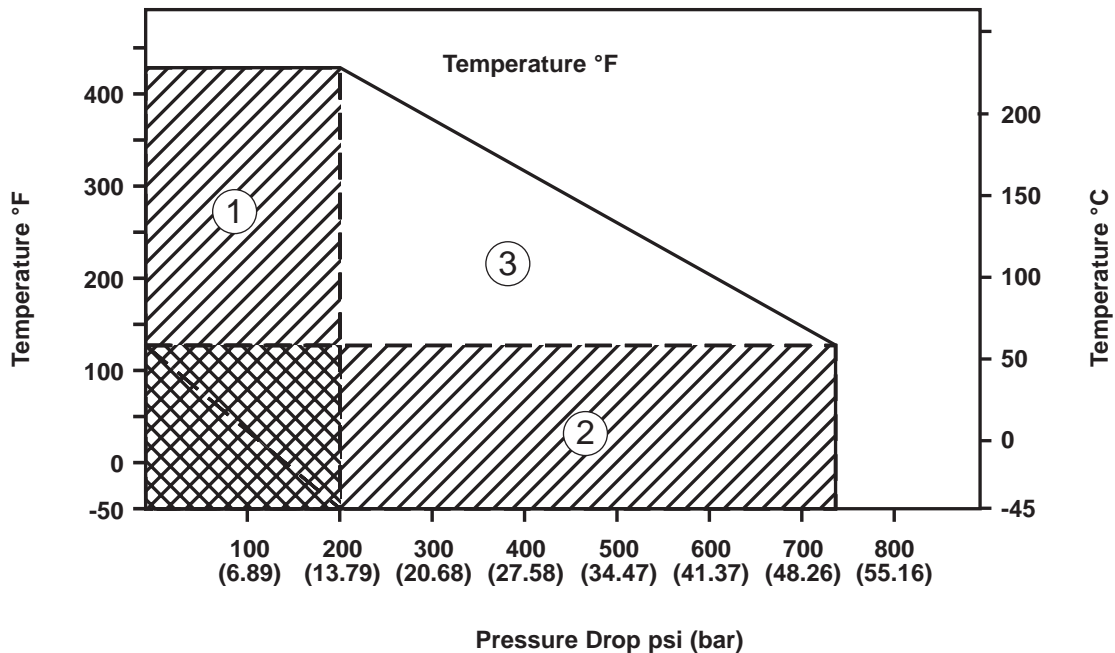
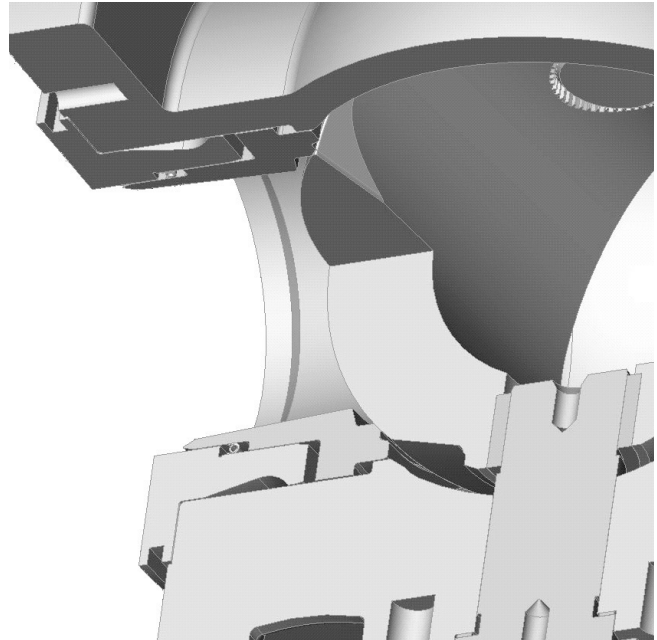
A strain hardened 316 stainless steel seal ring is an available option when the MN-7 Seal is not suitable. Seat leakage is per ANSI /FCI 70.2 Class IV. The metal seal ring can be used with either MN-7 lined bearings or the optional solid metal bearings. The fluid temperature is limited to 425°F (218°C) when using the MN-7 lined. A high temperature package consisting of metal seal ring, bearings and flexible graphite packing elevates fluid temperature limitations to 600°F (316°C) maximum or ANSI working pressure and temperature limitations. For use in lubricated service only.

Heavy Duty Metal Seal Ring (Bi-directional Flow)

A solid Heavy Duty Metal seat ring is available when the MN-7 or Standard Metal Seal ring is not suitable. The Heavy Duty Seat ring must be used with solid metal bearings. Fluid temperature is limited to 500°F (260°C) due to the material of the radial seal. Seat leakage is per ANSI/FCI 70.2 Class IV.

MN-7 Seal Ring Temperature Limitations

The standard MN-7 seal ring provides tight, ANSI/FCI 70.2 Class VI seat leakage. Pressure and temperature ratings of this design are limited as shown in the chart below as well as those shown in the corresponding pressure drop tables.



- ① Zone of maximum temperature limits
- ② Zone of maximum pressure limits
- ③ Zone of maximum interactive pressure/temperature limits

* For higher temperatures and other materials, consult Masoneilan

C_V and F_L Versus Travel

Flow Direction: Flow to Open

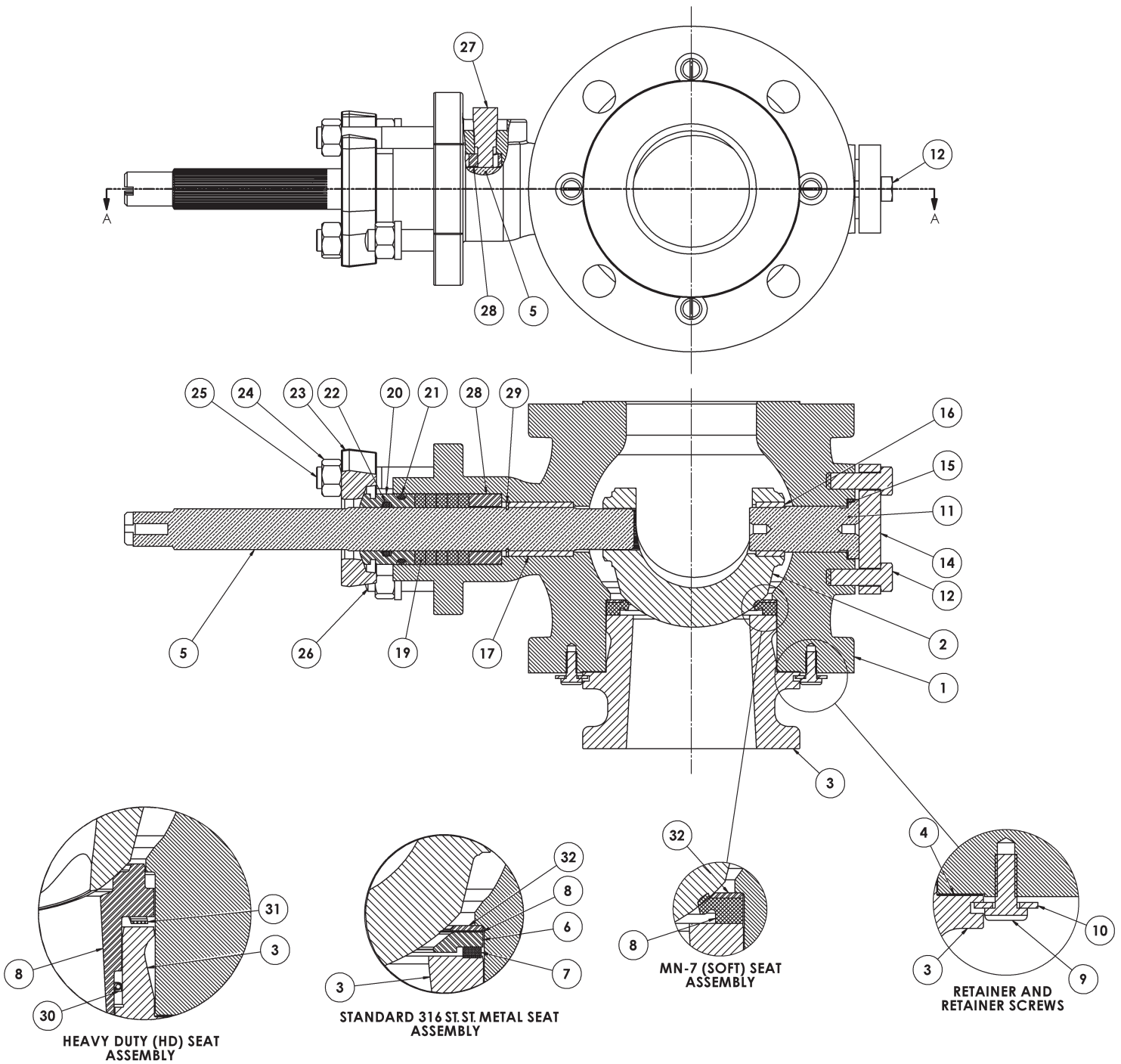
Flow Characteristics: Equal Percentage

ANSI Class: 150 and 300

Sizes: 1" through 12" (DN 25-300)

Percent (%) of Max. Opening		10	15	20	30	40	50	60	70	80	90	100
Percent (%) of Max. C _V		0.20%	0.98%	2.15%	5.2%	9.5%	15.0%	22.0%	31.5%	46.5%	72.0%	100.0%
F _L		0.92	0.91	0.90	0.89	0.87	0.83	0.80	0.76	0.72	0.67	0.60
Valve Size		Rated C _V										
in	DN											
1	25	0.11	0.54	1.2	2.9	5.2	8.3	12.1	17	26	40	55
1-1/2	40	0.25	1.2	2.7	6.5	12	19	28	39	58	90	125
2	50	0.34	1.7	3.7	8.8	16	26	37	54	79	122	170
3	80	0.88	4.3	9.5	23	42	66	97	139	205	317	440
4	100	1.48	7.3	16	38	70	111	163	233	344	533	740
6	150	2.50	12	27	65	119	188	275	394	581	900	1250
8	200	3.72	18	40	97	177	279	409	586	865	1339	1860
10	250	6.0	30	65	157	287	453	664	951	1404	2174	3020
12	300	8.8	43	95	229	418	660	968	1386	2046	3168	4400

Materials of Construction



Materials of Construction

Carbon Steel Construction

Ref. No	Temperature Range	-20°F	+425°F	+450°F	+500°F	+600°F
		-29°C	+218°C	+232°C	+260°C	+316°C
Description		Standard Materials				
1	Body Flanged	ASTM A216 Gr WCB Carbon Steel				
2	Ball Plug	ASTM A351 Gr CG8M Type 317, Hard Chromium Plated				
3	Retainer Standard (ISA S75.04)	ASTM A351 Gr CG8M Type 317				
	Retainer Extended (ANSI B16.10)					
4	Gasket (Retainer Body)	Flexible Graphite				
5	Stem Shaft	ASTM A564 Gr 630 H1075				
		Nitronic 50				
6	Backup Ring (Flat Metal Seat)	ASTM A240 Type 317L Stainless Steel				
7	Gasket (Flat Metal Seat)	316 Stainless Steel / Flexible Graphite				
8	Seat Ring Flexible Metal	ASTM A66 1/4 Hard Strain Hardened 316 Stainless Steel Sheet				
	Seat Ring	MN-7				
	Seat Ring Heavy Duty Rigid	Nitronic 60 Stainless Steel				
9	Slot Button Head Screw	Carbon Steel Plated				
10	Flat Washer	Carbon Steel Plated				
11	Pin Shaft	ASTM A564 Gr 630 H1075				
		Nitronic 50				
12	Cap Screw, End Flange	ASTM A193 Gr B8				
14	End Flange	ASTM A36 Plated				
15	Gasket Pin Shaft	Nitrile Bound Acrylic				
16	Lower Bushing	316 Stainless Steel / MN-7 Lined				
		Stellite				
17	Upper Bushing	316 Stainless Steel / MN-7 Lined				
		Stellite				
19	Packing Set	Crane 285K - TFE Aramid Core				
		Flexible Graphite				
20	Packing Follower	ASTM A582 Type 303 St. St.				
21	O-ring	Viton				
22	O-ring	Viton				
23	Packing Box Flange	ASTM A216 Gr WCC Plated				
24	Nut, Packing Flange Stud	ASTM A194 Gr 8				
25	Stud, Packing Flange	Alloy Steel ASTM A193 Gr B8				
26	Stud, Bonnet	Alloy Steel ASTM A193 Gr B8				
27	Safety Pin	ASTM A479 Type 316				
28	Packing Adapter	ASTM A479 Type 316				
29	Shaft Ring	ASTM A564 Gr 632				
30	Radial Seal, HD Seat	GFP Graphite Fiber Reinforced PTFE Seal, Hastelloy C276 Spring				
31	Wave Spring, HD Seat	Inconel X-750 Material (AM-5699) Precipitation Hardened				
32	Seat Support Ring, Downstream	ASTM A240 Type 317L Stainless Steel				
Ref. No	Temperature Range	-20°F	+425°F	+450°F	+500°F	+600°F
		-29°C	+218°C	+232°C	+260°C	+316°C

Materials of Construction

Stainless Steel Construction

Ref. No	Temperature Range	-50°F	+425°F	+450°F	+500°F	+600°F
		-46°C	+218°C	+232°C	+260°C	+316°C
Description		Standard Materials				
1	Body Flanged	ASTM A351 Gr CF8M Type 316				
		ASTM A351 Gr CG8M Type 317				
2	Ball Plug	ASTM A351 Gr CG8M Type 317, Hard Chromium Plated				
3	Retainer Standard (ISA S75.04)	ASTM A351 Gr CG8M Type 317				
	Retainer Extended (ANSI B16.10)					
4	Gasket (Retainer Body)	Flexible Graphite				
5	Stem Shaft	Nitronic 50 (Standard)				
		ASTM A564 Gr 630 H1075 (Optional)				
6	Backup Ring (Flat Metal Seat)	ASTM A240 Type 317L Stainless Steel				
7	Gasket (Flat Metal Seat)	316 Stainless Steel / Flexible Graphite				
8	Seat Ring Flexible Metal	ASTM A66 1/4 Hard Strain Hardened 316 Stainless Steel Sheet				
	Seat Ring	MN-7				
	Seat Ring Heavy Duty Rigid	Nitronic 60 Stainless Steel				
9	Slot Button Head Screw	Carbon Steel Plated				
10	Flat Washer	Carbon Steel Plated				
11	Pin Shaft	Nitronic 50 (Standard)				
		ASTM A564 Gr 630 H1075 (Optional)				
12	Cap Screw, End Flange	ASTM A193 Gr B8				
14	End Flange	ASTM A36 Plated				
15	Gasket Pin Shaft	Nitrile Bound Acrylic				
16	Lower Bushing	316 Stainless Steel / MN-7 Lined				
		Stellite				
17	Upper Bushing	316 Stainless Steel / MN-7 Lined				
		Stellite				
19	Packing Set	Crane 285K - TFE Aramid Core				
		Flexible Graphite				
20	Packing Follower	ASTM A582 Type 303 St. St.				
21	O-ring	Viton				
22	O-ring	Viton				
23	Packing Box Flange	ASTM A216 Gr WCC Plated				
24	Nut, Packing Flange Stud	ASTM A194 Gr 8				
25	Stud, Packing Flange	Alloy Steel ASTM A193 Gr B8				
26	Stud, Bonnet	Alloy Steel ASTM A193 Gr B8				
27	Safety Pin	ASTM A479 Type 316				
28	Packing Adapter	ASTM A479 Type 316				
29	Shaft Ring	ASTM A564 Gr 632				
30	Radial Seal, HD Seat	GFP Graphite Fiber Reinforced PTFE Seal, Hastelloy C276 Spring				
31	Wave Spring, HD Seat	Inconel X-750 Material (AMS 5699) Precipitation Hardened				
32	Seat Support Ring, Downstream	317 Stainless Steel				
Ref. No	Temperature Range	-50°F	+425°F	+450°F	+500°F	+600°F
		-46°C	+218°C	+232°C	+260°C	+316°C

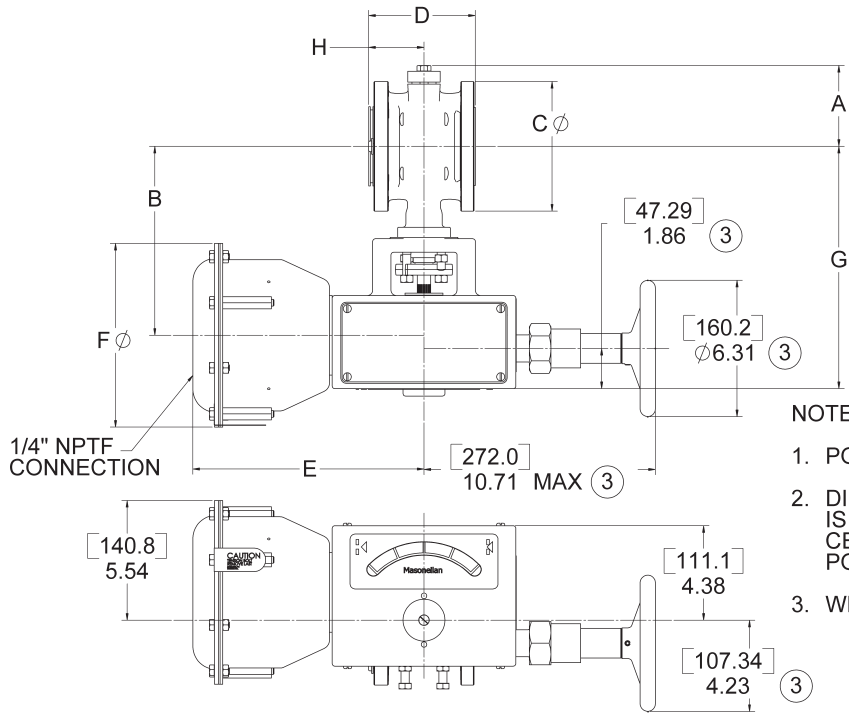
Materials of Construction

Carbon Steel NACE Construction - Complies with NACE MR0103-2003

Ref. No	Temperature Range	-50°F	-20°F	+425°F	+450°F	+500°F	+600°F
		-46°C	-29°C	+218°C	+232°C	+260°C	+316°C
Description		Standard Materials					
1	Body Flanged	ASTM A216 Gr WCB Carbon Steel					
		ASTM A351 Gr CF8M Type 316					
		ASTM A351 Gr CG8M Type 317					
2	Ball Plug	ASTM A351 Gr CG8M Type 317, Hard Chromium Plated					
3	Retainer Standard (ISA S75.04)	ASTM A351 Gr CG8M Type 317					
	Retainer Extended (ANSI B16.10)						
4	Gasket (Retainer Body)	Flexible Graphite					
5	Stem Shaft	Nitronic 50					
6	Backup Ring (Flat Metal Seat)	ASTM A240 Type 317L Stainless Steel					
7	Gasket (Flat Metal Seat)	316 Stainless Steel / Flexible Graphite					
8	Seat Ring Flexible Metal	ASTM A66 1/4 Hard Strain Hardened 316 Stainless Steel Sheet					
	Seat Ring	MN-7					
	Seat Ring Heavy Duty Rigid	Nitronic 50 Stainless Steel					
9	Slot Button Head Screw	Carbon Steel Plated					
10	Flat Washer	Carbon Steel Plated					
11	Pin Shaft	Nitronic 50					
12	Cap Screw, End Flange	ASTM A193 Gr B8					
14	End Flange	ASTM A36 Plated					
15	Gasket Pin Shaft	Nitrile Bound Acrylic					
16	Lower Bushing	316 Stainless Steel / MN-7 Lined					
		Stellite					
17	Upper Bushing	316 Stainless Steel / MN-7 Lined					
		Stellite					
19	Packing Set	Crane 285K - TFE Aramid Core					
		Flexible Graphite					
20	Packing Follower	ASTM A582 Type 303 St. St.					
21	O-ring	Viton					
22	O-ring	Viton					
23	Packing Box Flange	ASTM A216 Gr WCC Plated					
24	Nut, Packing Flange Stud	ASTM A194 Gr 8					
25	Stud, Packing Flange	Alloy Steel ASTM A193 Gr B8					
26	Stud, Bonnet	Alloy Steel ASTM A193 Gr B8					
27	Safety Pin	ASTM A479 Type 316					
28	Packing Adapter	ASTM A479 Type 316					
29	Shaft Ring	ASTM A564 Gr 632					
30	Radial Seal, HD Seat	GFP Graphite Fiber Reinforced PTFE Seal, Hastelloy C276 Spring					
31	Wave Spring, HD Seat	Inconel X-750 Material (AMS 5699) Precipitation Hardened					
32	Seat Support Ring, Downstream	ASTM A240 Type 317L Stainless Steel					
Ref. No	Temperature Range	-50°F	-20°F	+425°F	+450°F	+500°F	+600°F
		-46°C	-29°C	+218°C	+232°C	+260°C	+316°C

Dimensions

Actuator Model 33, Size AC – inches [millimeters]



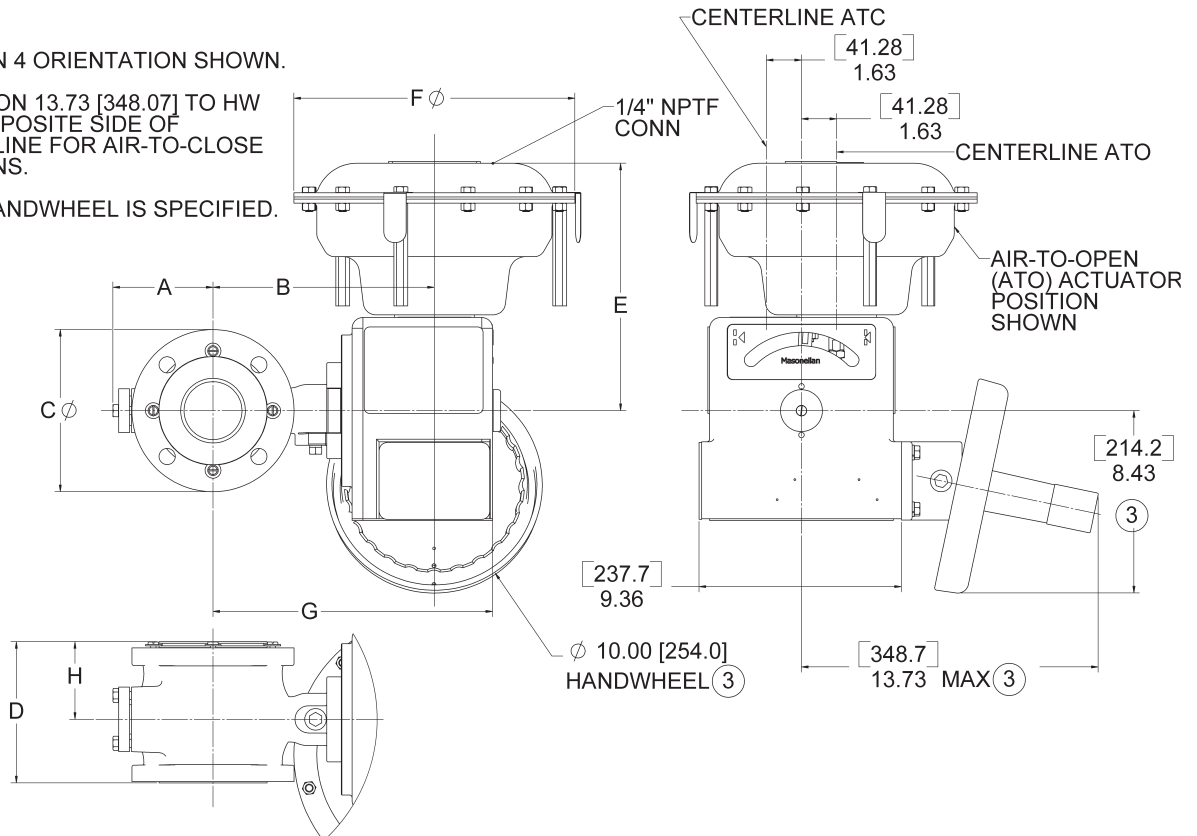
NOTES:

1. POSITION 4 ORIENTATION SHOWN.
2. DIMENSION 10.71 [272.0] TO HW IS ON OPPOSITE SIDE OF CENTERLINE FOR AIR-TO-CLOSE POSITIONS.
3. WHEN HANDWHEEL IS SPECIFIED.

Actuator Model 33, Size B and C – inches [millimeters]

NOTES:

1. POSITION 4 ORIENTATION SHOWN.
2. DIMENSION 13.73 [348.07] TO HW IS ON OPPOSITE SIDE OF CENTERLINE FOR AIR-TO-CLOSE POSITIONS.
3. WHEN HANDWHEEL IS SPECIFIED.



Dimensions

Actuator Model 33, Sizes AC, B and C (inches)

Valve Size		Actuator Size		A		B	C ⁽¹⁾		Face-to-Face D		E	F	G	Center-to-Face H	
in.	DN	Size	Sq. In.	ANSI 150	ANSI 300		ANSI 150	ANSI 300	Standard ISA S75.04 ⁽²⁾	Optional ASME B16.10 ⁽³⁾				Standard ISA S75.04 ⁽²⁾	Optional ASME B16.10 ⁽³⁾
1	25	AC	30	2.74	2.74	8.06	4.25	4.88	4.00	5.00	10.70	8.50	10.53	2.12	3.12
1.5	40	AC	30	3.13	4.08	8.33	5.00	6.12	4.47	6.49	10.70	8.50	10.80	2.43	4.46
2	50	AC	30	3.92	5.05	8.74	6.00	6.50	4.93	7.01	10.70	8.50	11.21	2.56	4.64
		B	70	3.92	5.05	8.52	6.00	6.50	4.93	7.01	11.45	13.00	11.21	2.56	4.64
3	80	B	70	4.64	4.64	10.24	7.50	8.25	6.54	8.00	11.45	13.00	12.93	3.59	5.06
		C	140	4.64	4.64	10.24	7.50	8.25	6.54	8.00	15.07	17.50	12.93	3.59	5.06
4	100	B	70	5.48	5.48	10.87	9.00	10.00	7.61	9.00	11.45	13.00	13.56	3.95	5.50
		C	140	5.48	5.48	10.87	9.00	10.00	7.61	9.00	15.07	17.50	13.56	3.95	5.50
6	150	C	140	6.76	6.76	12.09	11.00	12.50	8.99	10.52	15.07	17.50	14.78	4.85	6.37
8	200	C	140	7.88	7.88	13.81	13.50	15.00	9.59	11.50	15.07	17.50	16.50	5.03	6.95
10	250	C	140	9.46	9.46	15.75	16.00	17.50	11.69	13.02	15.07	17.50	18.44	6.09	7.42
12	300	C	140	10.63	10.63	16.92	19.00	20.50	13.33	14.00	15.07	17.50	19.61	7.52	8.19

Actuator Model 33, Sizes AC, B and C (millimeters)

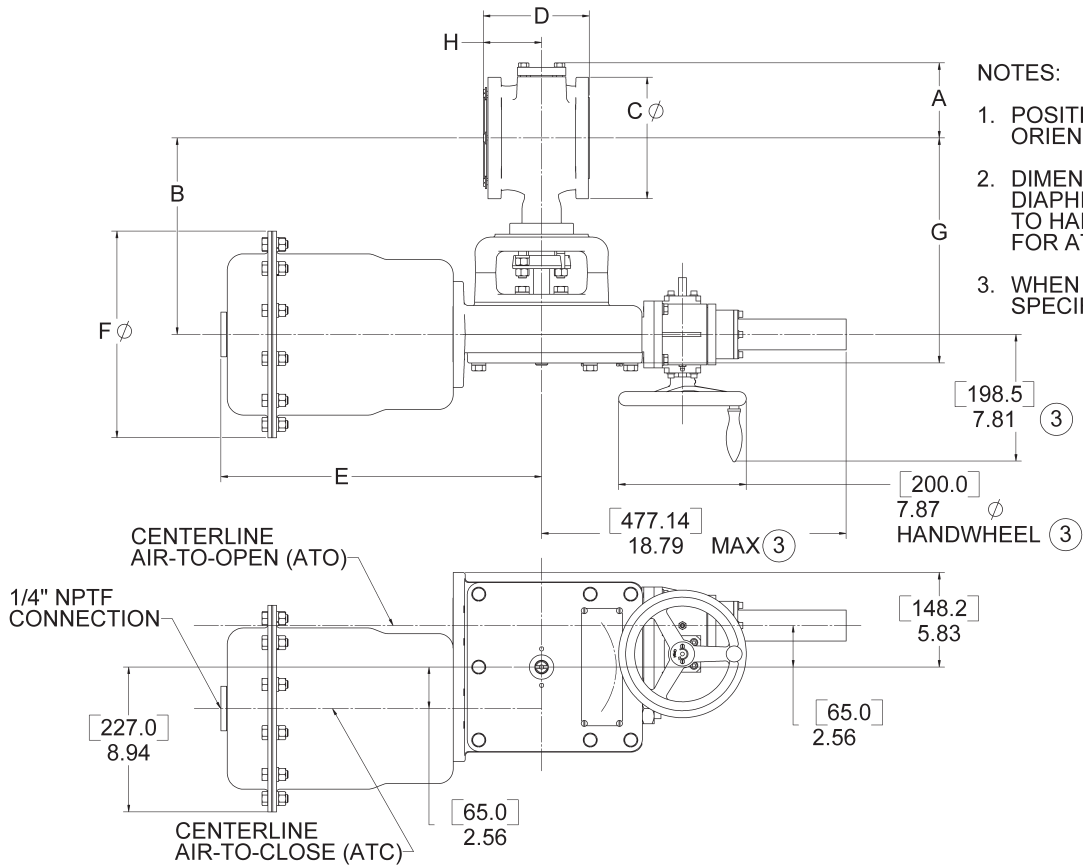
Valve Size		Actuator Size		A		B	C ⁽¹⁾		Face-to-Face D		E	F	G	Center-to-Face H	
in.	DN	Size	Sq. cm	ANSI 150	ANSI 300		ANSI 150	ANSI 300	Standard ISA S75.04 ⁽²⁾	Optional ASME B16.10 ⁽³⁾				Standard ISA S75.04 ⁽²⁾	Optional ASME B16.10 ⁽³⁾
1	25	AC	194	69.60	69.60	204.72	107.95	123.95	101.60	127.00	271.78	215.90	267.46	53.85	79.25
1.5	40	AC	194	79.50	103.63	211.58	127.00	155.45	113.54	164.85	271.78	215.90	274.32	61.72	113.28
2	50	AC	194	99.57	128.27	222.00	152.40	165.10	125.22	178.05	271.78	215.90	284.73	65.02	117.86
		B	452	99.57	128.27	216.41	152.40	165.10	125.22	178.05	290.83	330.20	284.73	65.02	117.86
3	80	B	452	117.86	117.86	260.10	190.50	209.55	166.12	203.20	290.83	330.20	328.42	91.19	128.52
		C	903	117.86	117.86	260.10	190.50	209.55	166.12	203.20	382.78	444.50	328.42	91.19	128.52
4	100	B	452	139.19	139.19	276.10	228.60	254.00	193.29	228.60	290.83	330.20	344.42	100.33	139.70
		C	903	139.19	139.19	276.10	228.60	254.00	193.29	228.60	382.78	444.50	344.42	100.33	139.70
6	150	C	903	171.70	171.70	307.09	279.40	317.50	228.35	267.21	382.78	444.50	375.41	123.19	161.80
8	200	C	903	200.15	200.15	350.77	342.90	381.00	243.59	292.10	382.78	444.50	419.10	127.76	176.53
10	250	C	903	240.28	240.28	400.05	406.40	444.50	296.93	330.71	382.78	444.50	468.38	154.69	188.47
12	300	C	903	270.00	270.00	429.77	482.60	520.70	338.58	355.60	382.78	444.50	498.09	191.01	208.03

Notes:

1. Conforms to ASME/ANSI Standard B16.5 - 1996 "Pipe Flanges and Flange Fittings"
2. Conforms to ISA Standard S75.04
3. Conforms to ASME Standard B16.10 - 1992 (formerly ANSI Standard B16.10 - 1973)
Short Pattern Ball. Available for ANSI 150 Class Valves ONLY

Dimensions

Actuator Model 31/32, Size D – inches [millimeters]



Dimensions

Actuator Model 31/32, Size D (inches)

Valve Size		Actuator Size		A		B	C ⁽¹⁾		Face-to-Face D		E	F	G	Center-to-Face H	
in.	DN	Size	Sq. In.	ANSI 150	ANSI 300		ANSI 150	ANSI 300	Standard ISA S75.04 ⁽²⁾	Optional ASME B16.10 ⁽³⁾				Standard ISA S75.04 ⁽²⁾	Optional ASME B16.10 ⁽³⁾
3	80	D	60	4.64	4.64	12.12	7.50	8.25	6.54	8.00	19.78	12.75	13.88	3.59	5.06
4	100	D	60	5.48	5.48	12.75	9.00	10.00	7.61	9.00	19.78	12.75	14.51	3.95	5.50
6	150	D	60	6.76	6.76	14.06	11.00	12.50	8.99	10.52	19.78	12.75	15.82	4.85	6.37
8	200	D	60	7.88	7.88	15.69	13.50	15.00	9.59	11.50	19.78	12.75	17.45	5.03	6.95
10	250	D	60	9.46	9.46	17.63	16.00	17.50	11.69	13.02	19.78	12.75	19.39	6.09	7.42
12	300	D	60	10.63	10.63	18.80	19.00	20.50	13.33	14.00	19.78	12.75	20.56	7.52	8.19

Actuator Model 31/32, Size D (millimeters)

Valve Size		Actuator Size		A		B	C ⁽¹⁾		Face-to-Face D		E	F	G	Center-to-Face H	
in.	DN	Size	Sq. cm	ANSI 150	ANSI 300		ANSI 150	ANSI 300	Standard ISA S75.04 ⁽²⁾	Optional ASME B16.10 ⁽³⁾				Standard ISA S75.04 ⁽²⁾	Optional ASME B16.10 ⁽³⁾
3	80	D	387	117.86	117.86	307.85	190.50	209.55	166.12	203.20	502.41	323.85	352.55	91.19	128.52
4	100	D	387	139.19	139.19	323.85	228.60	254.00	193.29	228.60	502.41	323.85	368.55	100.33	139.70
6	150	D	387	171.70	171.70	357.12	279.40	317.50	228.35	267.21	502.41	323.85	401.83	123.19	161.80
8	200	D	387	200.15	200.15	398.53	342.90	381.00	243.59	292.10	502.41	323.85	443.23	127.76	176.53
10	250	D	387	240.28	240.28	447.80	406.40	444.50	296.93	330.71	502.41	323.85	492.51	154.69	188.47
12	300	D	387	270.00	270.00	477.52	482.60	520.70	338.58	355.60	502.41	323.85	522.22	191.01	208.03

Notes:

1. Conforms to ASME/ANSI Standard B16.5 - 1996 "Pipe Flanges and Flange Fittings"
2. Conforms to ISA Standard S75.04
3. Conforms to ASME Standard B16.10 - 1992 (formerly ANSI Standard B16.10 - 1973)
Short Pattern Ball. Available for ANSI 150 Class Valves ONLY

Assembly Weights

Valve Size		Actuator		Valve and Actuator Assembly Weights (without Manual Override)						Manual Override	
				Standard ISA S75.04 Face-to-Face				Optional ASME B16.10 Face-to-Face			
				ANSI Class 150 Flanged		ANSI Class 300 Flanged		ANSI Class 150 Flanged ONLY		Add to Valve / Actuator Weight	
in.	DN	Model	Size	lbs	Kg	lbs	Kg	lbs	Kg	lbs	Kg
1	25	33	AC	50	22	53	24	50	23	7	3
1.5	40	33	AC	54	24	61	27	56	25	7	3
2	50	33	AC	60	27	81	37	63	29	7	3
		33	B	101	46	122	55	103	47	27	12
3	80	33	B	124	56	134	61	128	58	27	12
		33	C	182	82	192	87	186	84	27	12
		31/32	D	227	103	237	107	231	105	12	5
4	100	33	B	147	67	166	75	152	69	27	12
		33	C	205	93	224	101	210	95	27	12
		31/32	D	250	113	269	122	255	116	12	5
6	150	33	C	250	114	288	131	260	118	27	12
		31/32	D	295	134	333	151	305	138	12	5
8	200	33	C	303	137	359	163	326	148	27	12
		31/32	D	348	158	404	183	371	168	12	5
10	250	33	C	393	178	416	189	480	217	27	12
		31/32	D	438	199	461	209	525	238	12	5
12	300	33	C	520	236	540	245	642	291	27	12
		31/32	D	565	256	585	265	687	312	12	5

Notes

Sales Office Locations

BELGIUM

Dresser Valves Europe
Boulevard du Souverain 207 B2 Vorstlaan,
B-1160 Brussels, Belgium
Phone: +32-2-344-0970
Fax: +32-2-344-1123

BRAZIL

Dresser Industria e Comercio Ltda
Divisao Masoneilan
Rua Funchal, 129 - Conj. 5A
04551-060 - Sao Paulo - SP Brazil
Phone: 55-11-2146-3600
Fax: 55-11-2146-3610

CANADA

Ontario
Dresser - Masoneilan
DI Canada, Inc.
835 Harrington Court, 2nd Floor
Burlington, Ontario L7N 3P3, Canada
Phone: 905-335-3529
Fax: 905-336-7628

CHINA

Dresser Flow Solutions, Beijing Rep. Office
Suite 1703, Capital Mansion
6 Xinyuannan Rd. Chaoyang District
Beijing 100004, China
Phone: +86-10-8486-4515
Fax: +86-10-8486-5305

FRANCE

Masoneilan - Dresser Produits Industriels
Energy 5
130/190 Boulevard de Verdun
92413 Courbevoie cedex, France
Phone: +33-1-4904-9000
Fax: +33-1-4904-9010

Dresser Produits Industriels S.A.S.,
Masoneilan Customer Service Centre
55 rue de la Mouche, Zone Industrielle
69540 Irigny, France
Phone: +33-4-72-39-06-29
Fax: +33-4-72-39-21-93

GERMANY

Dresser Valves Europe GmbH
Heiligenstrasse 75
Viersen D-41751, Germany
Phone: +49-2162-8170-0
Fax: +49-2162-8170-280

Dresser Valves Europe GmbH
Uhlhandstrasse 58
60314 Frankfurt, Germany
Phone: +49-69-439350
Fax: +49-69-4970802

INDIA

Dresser Valve India Pvt. Ltd.
305/306, "Midas", Sahar Plaza
Mathurdas Vasanti Road
J.B. Nagar, Andheri East
Mumbai, 400059, India
Phone: +91-22- 8354790
Fax: +91-22-8354791

Dresser Valve India Pvt. Ltd.
205, Mohta Building
4 Bhikaji Cama Place
New Delhi, 110 066, India
Phone: +91-11-2-6164175
Fax: +91-11-5-1659635

ITALY

Dresser Italia S.r.l.
Masoneilan Operations
Via Cassano, 77
80020 Casavatore, Napoli Italy
Phone: +39-081-7892-111
Fax: +39-081-7892-208

JAPAN

Niigata Masoneilan Co. Ltd. (NIMCO)
20th Floor, Marive East Tower
WBG 2-6 Nakase, Mihama-ku,
Chiba-shi, Chiba 261-7120 Japan
Phone: +81-43-297-9222
Fax: +81-43-299-1115

KOREA

Dresser Korea Inc.
2109 Kuk Dong Building 60-1
3-Ka, Choongmu-ro Chung-Ku
Seoul, Korea
Phone: +82-2-2274-0748
Fax: +82-2-2274-0720

KUWAIT

Dresser Flow Solutions
Middle East Operations
10th Floor, Al Rashed Complex
Fahad Salem Street, P.O. Box 242
Safat, 13003, Kuwait
Phone: +965-9061157
Fax: +965-3987879

MALAYSIA

Dresser Flow Solutions
Business Suite, 19A-9-1, Level 9
UOA Centre, No. 19, Jalan Pinang
50450 Kuala Lumpur, West Malaysia
Phone: +60-3-2161-0322
Fax: +60-3-2163-3612

MEXICO

Dresser Valve de Mexico, S.A. de C.V.
Henry Ford No. 114, Esq. Fulton
Fraccionamiento Industrial
San Nicolas
54030 Tlalnepantla Estado de Mexico
Phone: 52-5-310-9863
Fax: 52-5-310-5584

THE NETHERLANDS

Dresser Valves Europe
Steenhouwerstraat 11
3194 AG Hoogvliet, The Netherlands
Phone: +31-10-438-4122
Fax: +31-10-438-4443

RUSSIA

DS Controls
Nekhinskaya Street, 61
Veliky Novgorod
Russia, 173021
Phone: +7-8162-15-7898
Fax: +7-8162-15-7921

SAUDI ARABIA

Dresser AL Rushaid
Valve & Instrument Co., Ltd.
(Darvico)
P.O. Box 10145
Jubail Industrial City 31961,
Saudi Arabia
Phone: +966-3-341-0278
Fax: +966-3-341-7624

SINGAPORE

Dresser Singapore Pte Ltd.
16 Tuas Avenue 8
Singapore 639231
Phone: +65-6-6861-6100
Fax: +65-6-6861-7172

SOUTH AFRICA

Dresser Limited
P.O. Box 2234
16 Edendale Road
Eastleigh, Edenvale 1610
Republic of South Africa
Phone: +27-11-452-1550
Fax: +27-11-452-6542

SPAIN

Masoneilan S.A.
C/Murcia 39 C
08830 Sant Boi de Llobregat
Barcelona, Spain
Phone: +34-93-652-6430
Fax: +34-93-652-6444

UNITED ARAB EMIRATES

Dresser Flow Solutions
Middle East Operations
P.O. Box 61302
Roundabout 8
Units JA01 & JA02
Jebel Ali Free Zone
Dubai, U. A. E.
Phone: +971-4-8838-752
Fax: +971-4-8838-038

UNITED KINGDOM

DI U.K. Ltd.
East Gillibrands
Skelmersdale,
Lancashire WN8 9TU,
England
Phone: +44-1695-52600
Fax: +44-1695-52601

DI U.K. Ltd.
Unit 4, Suite 1.1,
Nobel House
Grand Union Office Park
Packet Boat Lane
Uxbridge, Middlesex UB8
2GH
Phone: +44-1895-454-900
Fax: +44-1895-454-919

UNITED STATES

Dresser - Masoneilan
85 Bodwell Street
Avon, MA 02322-1190
Phone: 508-586-4600
Fax: 508-427-8971

Dresser - Masoneilan
4841 Leopard Street
Corpus Christi, TX
78408-2621
Phone: 361-877-2414
Fax: 361-584-1196

Dresser - Masoneilan
Dresser Direct
1250 Hall Court
Deer Park, TX 77536
Phone: 281-884-1000
Fax: 281-884-1010

Dresser Flow Solutions
(Contractor Sales)
16240 Port Northwest Drive
Houston, TX 77041
Phone: 832-590-2303
Fax: 832-590-2529

Dresser - Masoneilan
2950 East Birch Street
Brea, CA 92821
Phone: 714-572-1528
Fax: 714-572-1463

