

# Masoneilan®

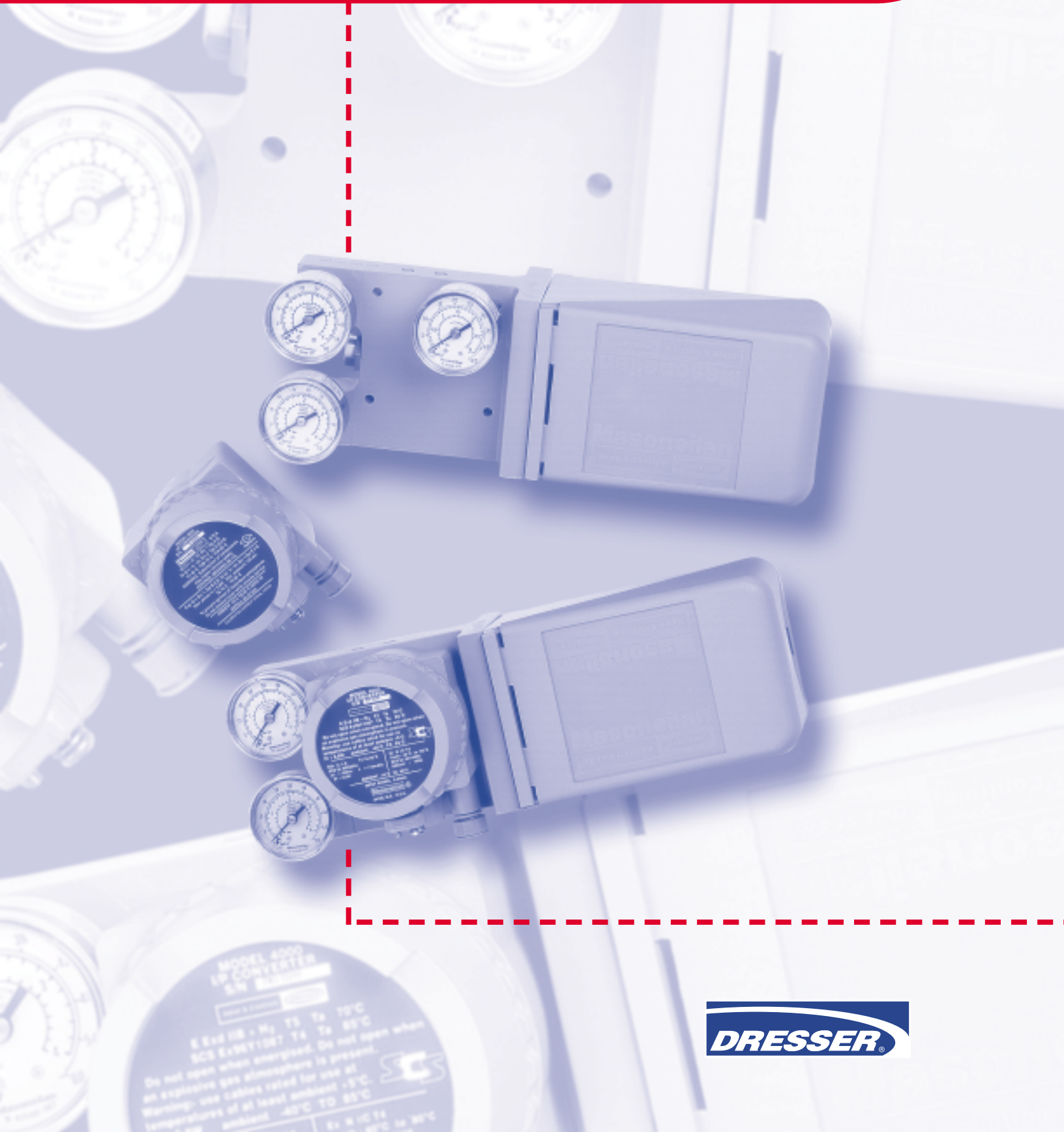
Specification Data

## Corrosion Resistant Positioners

CS2007 E

### Models 4700P/4700E and 4800P/4800E

06/03



# Table of Contents

Foreword .....	2
Numbering System .....	3
Specification Data .....	3 - 4
Operation/Features .....	5 - 6
Instrument Signals .....	7
Parts Reference .....	8 - 11
Masoneilan Direct Sales Offices .....	12

## Foreword

The Models 4700E/4800E (Electric) and 4700P/4800P (Pneumatic) are field proven positioners utilizing a precision feedback cam to provide accurate positioning, very fast response, and customized control characteristics for control valves. These positioners can be used with either rotary or reciprocating actuators. When mounted on reciprocating actuators, a simple, rugged turnbuckle and lever assembly couples stem motion to the cam. On rotary acutators, the cam is mounted directly on the shaft.

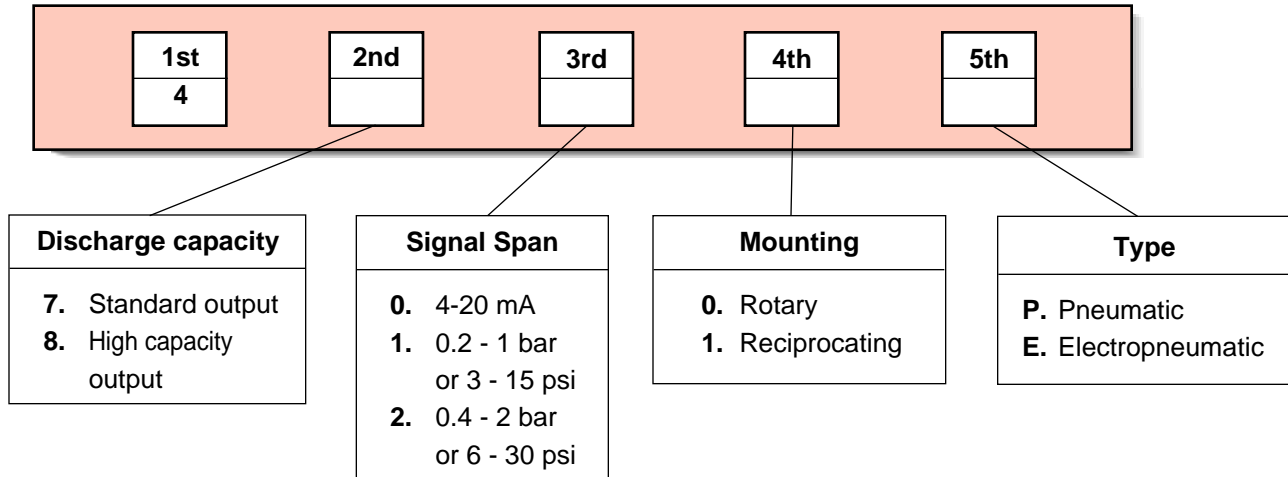
The main features of the Models 4700P/4700E and 4800P/4800E positioners are:

- **one multi-lobe cam** - The cam provides linear, split linear and equal percentage control characteristics. Custom characteristics are available on special order.
- **zero adjustments** - Adjustment of the positioner zero can easily be accomplished by means of the adjustable spring button. Further zeroing can be performed through the turnbuckle assembly on linear motion actuators.

- **corrosion resistant material** - Protection against harsh environments. Internal componts are manufactured of corrosion resistant materials.
- **fully enclosed** - All adjustments are fully enclosed for protection from the environment
- **simplicity** - Positioner action can be reversed without additional parts (4700P/4800P only). The same mounting orientation is used for both direct and reverse action.
- **easy to maintain** - The pilot valve is the only moving part in the pilot housing. It is easily removed without disassembling any other part of the positioner.
- **optional bypass** - A molded nylon bypass valve with an O-ring seal permits continued automatic control during the cleaning of the pilot valve. The bypass valve is concealed in back of the unit to prevent tampering. The bypass is available only on the direct action 4700P pneumatic positioner.
- **damping adjustment** - On Model 4700, actuator travel speed can be adjusted as required for stable operation.

Trade names noted throughout are for reference only. Masoneilan reserves the right to supply trade named material or its equivalent.

## Numbering System



## Specification Data

**Type :** cam feedback, pneumatic, force balanced; electropneumatic positioner uses current to pneumatic converter to generate pneumatic operating signal

**Action :** direct: increasing signal increases output  
reverse: increasing signal decreases output

Note: Reverse Action is available only on the 4700P/4800P Pneumatic Positioner

**Characteristics :** linear  
 equal percentage  
 custom

**Maximum air consumption :** 4700 : 0.5 Nm<sup>3</sup>/h - 1.7 bar eff supply  
 4800 : 0.9 Nm<sup>3</sup>/h - 1.7 bar eff supply

**Output and exhaust capacity :** see Figure 1 (page 4)

<b>Temperature effects span error (typical) :</b>	<b>Temp. Range °C</b>	<b>Error</b>
	-40 to -20	0.31% per °C
	-20 to +60	0.06% per °C
	+60 to +85	0.11% per °C

**Supply pressure influence :** less than 0.37% stroke change per 100 mbar supply change

**Maximum air supply rating :** dictated by actuator, but never greater than 100 psig

**Connections :**  
 - pneumatic 1/4" NPT (4700) or 3/8" NPT (4800)  
 - electrical 1/2" NPT or M20

**Weight :**  
 4700P - 1.6 kg (3.5 lbs)  
 4700E - 2.1 kg (4.7 lbs)  
 4800P - 1.9 kg (4.2 lbs)  
 4800E - 2.4 kg (5.3 lbs)

Performance	4700P	4700E
<b>Deadband</b>	< 0.2% of span	<0.5% of span
<b>Hysteresis</b>	< 0.2% of span	<0.5% of span
<b>Repeatability</b>	within 0.2% of span	within 0.5% of span
<b>Sensitivity</b>	better than 0.2% of span	better than 0.3% of span
<b>Conformity</b>	±1% of span	±1% of span
<b>Input resistance 4-20 mA signal</b>	N/A	170 ohms nominal

# Hazardous Area Installations

The positioner is available in versions suitable for use in hazardous areas. The labeling on the positioner indicates correct areas of use.

## ATEX approved version (94/9/EC Directive)

**Explosionproof :** II 2 G/D EEx d IIC  
 T6 (Tamb. = -40°C to +55°C)  
 T5 (Tamb. = -40°C to +70°C)  
 T4 (Tamb. = -40°C to +85°C)  
 IP 66 T90 (Ta +80°C)  
 N° SIRA 02 ATEX 1274

**Intrinsically Safe :** II 1 G/D EEx ia IIC  
 T6 (Tamb. = -40°C to +55°C)  
 T4 (Tamb. = -40°C to +80°C)  
 IP 66 T90 (Ta +80°C)  
 N° SIRA 02 ATEX 2277 X

## Factory Mutual approved version

**Explosionproof :**  
 Class I, Division 1, Groups B, C, and D.  
 Temperature classification T6 @ 75°C ambient  
 T5 @ 85°C ambient  
 Indoor and outdoor (NEMA Type 4X) hazardous (classified) locations.

**Dust-Ignitionproof :**  
 Class II / III, Division 1, Groups E, F, and G.

**Non-Incendive :**  
 Class I / II / III, Division 2, Groups A, B, C, D, F, and G.

## Intrinsically Safe :

Class I / II / III, Division 1, Groups A, B, C, D, E, F, and G hazardous indoor/outdoor NEMA 4X locations.  
 Temperature Classification T4 @ 40°C ambient  
 T3B @ 70°C ambient  
 T3A @ 85°C ambient

## CSA (Canadian Standards Association) approved version

**Explosionproof :**  
 Class I, Groups B, C, and D  
 Class II, Groups E, F, and G  
 and Class III rated at 30 mA maximum, 28 Vdc maximum, with a temperature code T6 @ 75°C  
 T5 @ 85°C

## Division 2 :

Class I, Division 2, Groups A, B, C, and D rated 30 mA maximum and 28Vdc maximum.

## Intrinsically Safe :

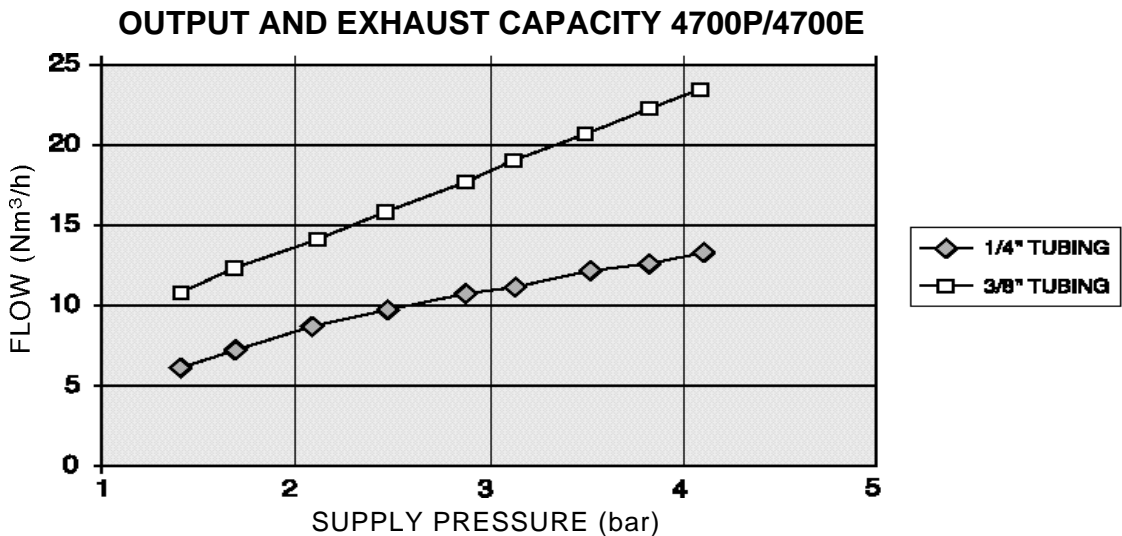
Class I, Division 1, Groups A, B, C, and D.  
 Class II, Division 1, Groups E, F, and G.  
 Class III rated at 30 mA and 28 Vdc maximum.  
 Temperature code T6 @ 55°C  
 T4A @ 85°C

## Non-Incendive :

Class I, Division 2, Groups A, B, C, and D.  
 30 mA and 28 Vdc maximum.

## Enclosure rating :

IP 66 and NEMA 4X in hazardous indoor/outdoor locations.



The Models 4700P/4700E and 4800P/4800E cam positioners provide precise positioning, fast response, and customized control characteristics.

The main features of the Models 4700P/4700E and 4800P/4800E are:

- **cam characterization** - This cam provides field changeable, linear, split range linear, and equal percentage control characteristics. Custom characteristics are available on special order.
- **zero and span adjustments** - For ease of installation and maintenance, two simple procedures provide easy adjustment of zero and span. An adjustment nut allows zeroing while span is accomplished by changing the effective length of the feedback spring. All adjustments are fully enclosed for protection from the environment.

***NOTE: The electropneumatic (4700E/4800E) positioner has no adjustments in the I/P module.***

- **simple and easy to maintain** - The pilot valve is the only moving part in the pilot housing. It is easily removed without disassembling any other part of the positioner. An optional bypass valve module is available for use on the Model 4700P pneumatic direct acting positioner. Where operating parameters allow, it permits the positioner to be isolated for maintenance while operating the valve directly with the instrument signal. The bypass module is mounted on the back of the positioner to discourage tampering.
- **corrosion resistance** - Premium performance is the standard on the Models 4700P/4700E and 4800P/4800E positioners. Internal components are manufactured of corrosion resistant materials for protection against the harshest environments.

### **ROTARY VALVES**

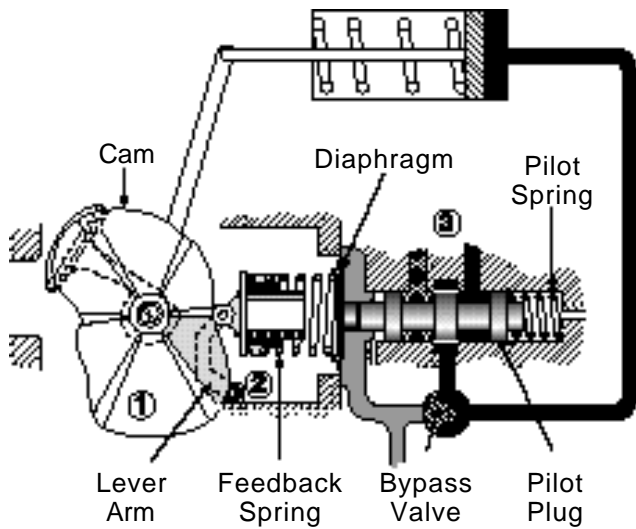
On rotary valves, the cam assembly is attached directly to the end of the shaft, and only one positioner assembly is required. This proven performer eliminates linkage and associated backlash problems.

### **RECIPROCATING VALVES**

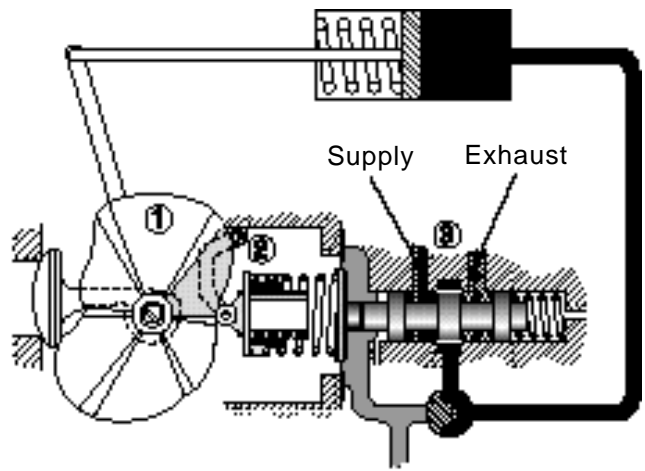
For use with reciprocating valve spring diaphragm actuators, the positioner is fitted with a post hub and shaft on which the cam is mounted. Actuation is transmitted to the cam via a rugged and simple turnbuckle and lever assembly.

# Operation/Features

**Direct Positioner Action**

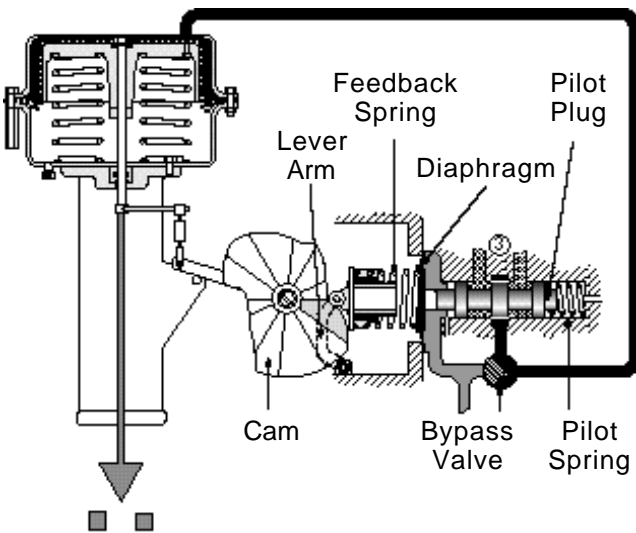


**Reverse Positioner Action  
(4700P/4800P Only)**

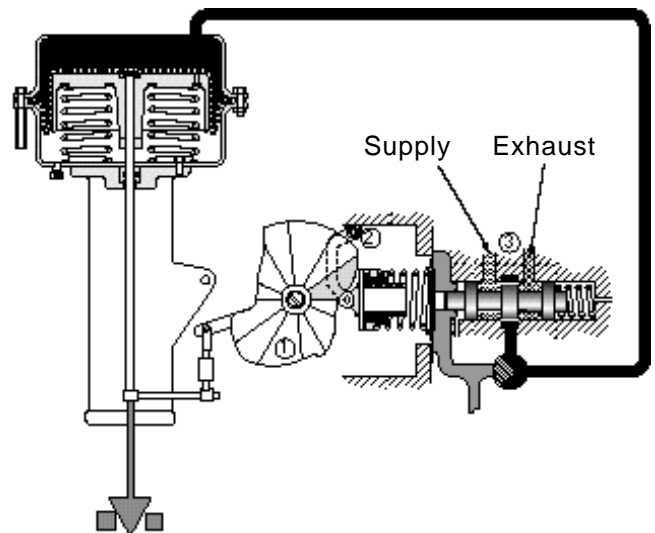


**Figure 2 - Rotary**

**Direct Positioner Action**



**Reverse Positioner Action  
(4700P/4800P Only)**



**Figure 3 - Reciprocating**



For 4700P/4800P models only, positioner action can be reversed by simply engaging the proper lobe on the cam and reversing the follower arm (numbers 1 and 2 above), and the supply and exhaust ports (number 3 above).

## Characteristics shown represent final valve characteristic

### Models 4700P/4700E and 4800P/4800E (Camflex® II and Varimax)

Characteristics			
Linear		Equal Percentage	
psi	bar	psi	bar
3 - 9	0.2 - 0.6	3 - 15	0.2 - 1
3 - 15	0.2 - 1	3 - 27	0.2 - 1.8
3 - 27	0.2 - 1.8	6 - 30	0.4 - 2
6 - 18	0.4 - 1.2		
6 - 30	0.4 - 2		
9 - 15	0.6 - 1		
15 - 27	1 - 1.8		
18 - 30	1.2 - 2		

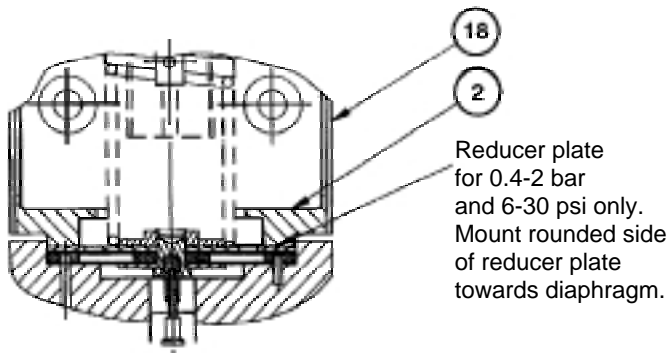
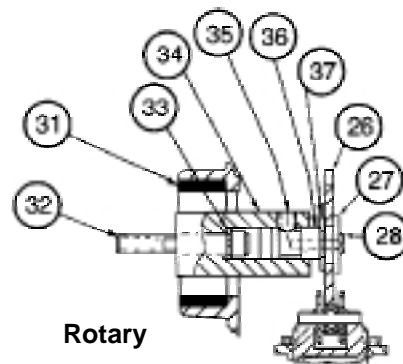
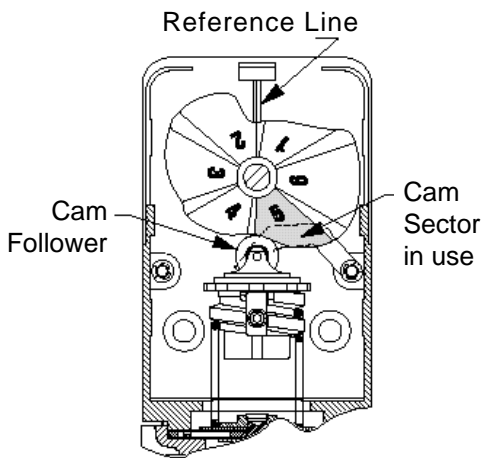
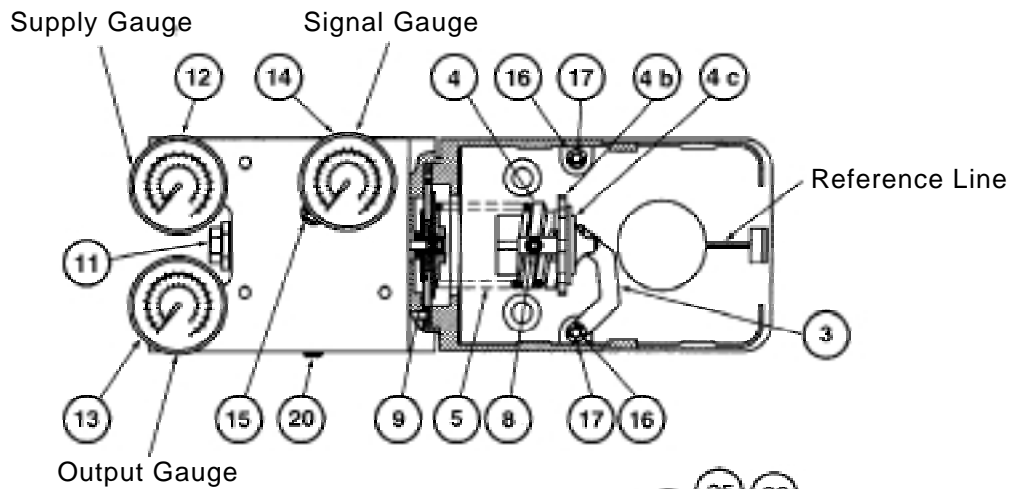
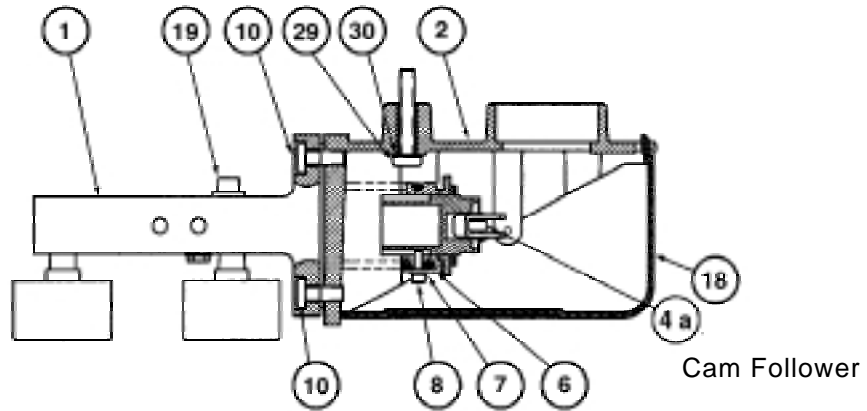
### Models 4700P/4700E and 4800P/4800E (87/88 Actuator)

Characteristics			
Linear		Equal Percentage	
psi	bar	psi	bar
3 - 9	0.2 - 0.6	3 - 15	0.2 - 1
3 - 15	0.2 - 1	3 - 27	0.2 - 1.8
3 - 27	0.2 - 1.8	6 - 30	0.4 - 2
6 - 18	0.4 - 1.2		
6 - 30	0.4 - 2		
9 - 15	0.6 - 1		
15 - 27	1 - 1.8		
18 - 30	1.2 - 2		

### Models 4700P/4700E and 4800P/4800E (MiniTork® II, 38002 TFE-Lined, 39002 HPBV and Paramax)

Characteristics	
Equal Percentage	
psi	bar
3 - 9	0.2 - 0.6
3 - 15	0.2 - 1
3 - 27	0.2 - 1.8
6 - 18	0.4 - 1.2
6 - 30	0.4 - 2
9 - 15	0.6 - 1
15 - 27	1 - 1.8
18 - 30	1.2 - 2

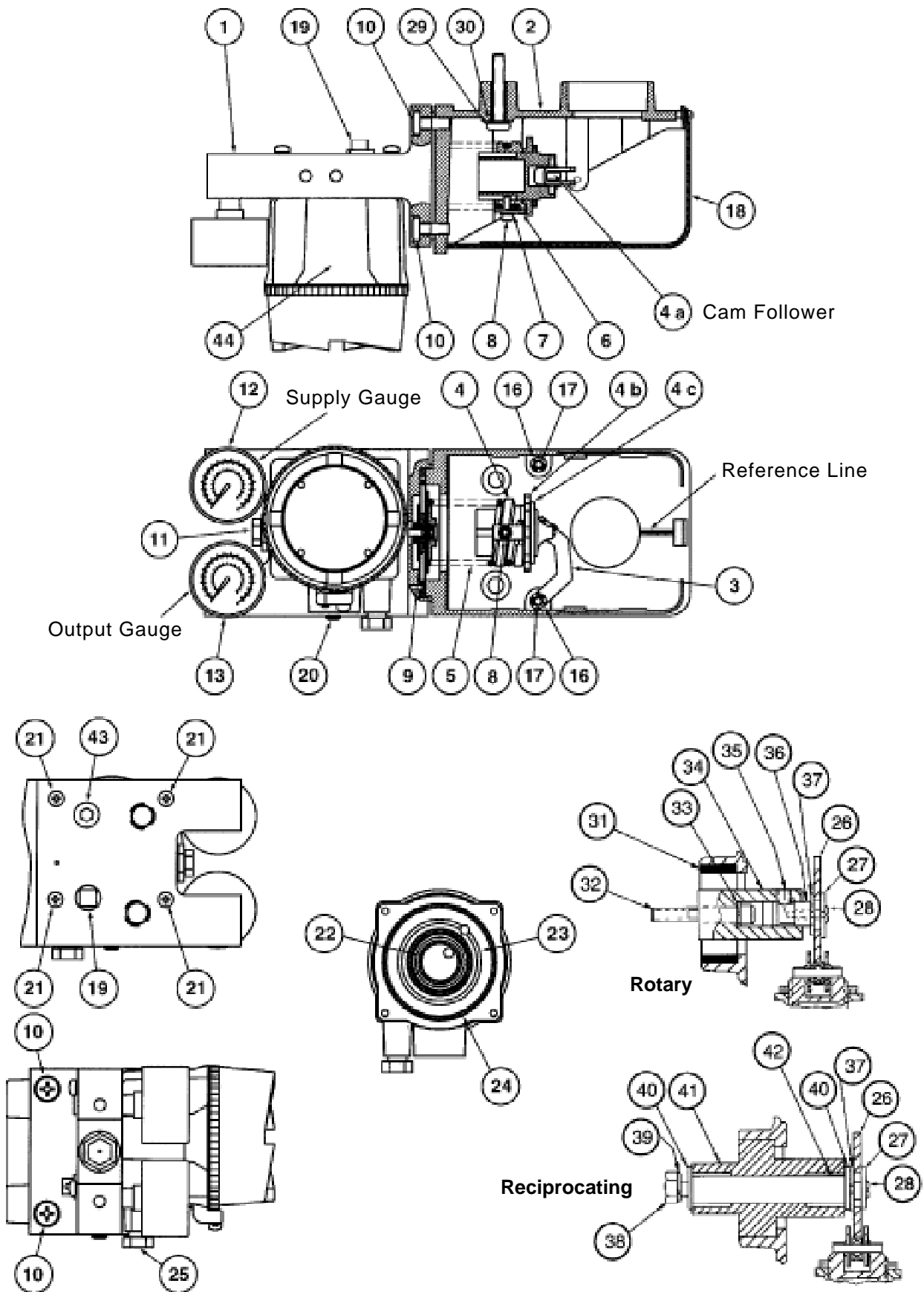
**4700P/4800P 0.2-1 bar or 3-15 psi  
and 0.4-2 bar or 6-30 psi**





**Models 4700P/4800P positioners  
0.2-1 bar or 3-15 psi range and 0.4-2 bar or 6-30 psi range**

Ref. No.	Description	Ref. No.	Description
1	Body S/A	26	Cam
2	Case S/A	27	Washer
3	Lever S/A	28	Pan Head Screw
4	Spring End	29	Socket Head Screw
4A	Cam Follower	30	Lockwasher
4B	Zero Nut	31	Gasket
4C	Zero Locknut	32	Socket Head Screw
5	Spring, Feedback	33	Lockwasher
6	Clamp	34	Coupling
7	Lockwasher	35	Socket Head Set Screw
8	Socket Head Screw	36	Cam Holder
9	Diaphragm S/A	37	Truarc Ring
10	Screw	38	Cap Screw
11	Pilot S/A	39	Lockwasher
12	Supply Gauge	40	Washer
13	Output Gauge	41	Post Hub S/A
14	Instrument Gauge	42	Input Shaft
15	Screw, Washer Head		
16	Washer		
17	Retaining Clip		
18	Cover, Case		
19	Vent Plug		
20	Screw, Sealing, Set 5/16-24 x .5		



## Models 4700E and 4800E positioners

Ref. No.	Description	Ref. No.	Description
1	Body S/A	26	Cam
2	Case S/A	27	Washer
3	Lever S/A	28	Pan Head Screw
4	Spring End	29	Socket Head Screw
4A	Cam Follower	30	Lockwasher
4B	Zero Nut	31	Gasket
4C	Zero Locknut	32	Socket Head Screw
5	Spring, Feedback	33	Lockwasher
6	Clamp	34	Coupling
7	Lock Washer	35	Socket Head Set Screw
8	Socket Head Screw	36	Cam Holder
9	3-15 Diaphragm S/A	37	Truarc Ring
10	Screw	38	Cap Screw
11	Pilot S/A	39	Lockwasher
12	Supply Gauge	40	Washer
13	Output Gauge	41	Post Hub S/A
16	Washer	42	Input Shaft
17	Retaining Clip	43	Plug, Pipe 1/4" NPT
18	Cover, Case	44	I/P Module Assembly
19	Vent Plug		
20	Screw, Sealing, Set 5/16-24 x .5		
21	Screw 8-32 x 1.25		
22	O-ring .81" ID		
23	O-ring 1.31" ID		
24	O-ring 2.38" ID		
25	Breather		

# Masoneilan Direct Sales Offices

## BELGIUM

Dresser Valves Europe  
281-283 Chaussée de Bruxelles, 1190 Brussels  
Telephone + 32.2.3440970  
Fax + 32.2.3441123

## BRAZIL

Dresser Industria e Comercio Ltda.  
Rua Senador Vergueiro, 433  
09521-320 Sao Caetano Do Sul, Sao Paulo  
Telephone + 55.11.453.5511  
Fax + 55.11.453.5565

## CANADA

Ontario  
Dresser - Masoneilan - DI Canada Inc.  
5010 North Service Road, Burlington, Ontario L7L 5R5  
Telephone + 1.905.335.3529  
Fax + 1.905.336.7628

## Alberta

Dresser - Masoneilan - DI Canada Inc.  
Suite 1300, 311-6th Ave., S.W., Calgary, Alberta T2P 3H2  
Telephone + 1.403.290.0001  
Fax + 1.403.290.1526

## CHINA

Dresser  
Suite 2403, Capital Mansion, 6 Xinyuannan Rd.  
Chao Yang District, Beijing 100040  
Telephone + 86.10.64661164  
Fax + 86.10.64660195

## FRANCE

Dresser Produits Industriels S.A.S.  
4, Place de Saverne, 92971 Paris la Défense Cedex  
Telephone + 33.1.49.04.90.00  
Fax + 33.1.49.04.90.10

Dresser Produits Industriels S.A.S.  
55, rue de la Mouche, 69540 Irigny (Lyon)  
Telephone + 33.4.72.39.06.29  
Fax + 33.4.72.39.21.93

## GERMANY

Dresser Valves Europe GmbH  
Heiligenstrasse 75, 41751 Viersen (Dülken)  
Telephone + 49.2162.81.700  
Fax + 49.2162.81.70.200

Dresser Valves Europe GmbH  
Uhlandstrasse 58, 60314 Frankfurt  
Telephone + 49.69.439350  
Fax + 49.69.4970802

## INDIA

Dresser Valve India Pvt. Ltd.  
305/306 "Midas" Sahar Plaza, Mathurdas Vasani Road  
J.B. Nagar, Andheri East, Mumbai - 400059  
Telephone + 91.22.28351134  
Fax + 91.22.28354791

Dresser Valve India Pvt. Ltd.  
205, Mohta Building, 4, Bhikaiji Cama Place  
New Delhi - 110066  
Telephone + 91.11.26164175  
Fax + 91.11.26165618

## ITALY

Dresser Italia S.r.l. - Masoneilan Division  
Via Cassano, 77 - 80020 Casavatore, Naples  
Telephone + 39.081.7892111  
Fax + 39.081.7892208

## JAPAN

Niigata Masoneilan CO. Ltd.  
20th Floor, Marive East Tower, WBG 2-6 Nakase,  
Mihama-Ku, Chiba-shi, Chiba 261-7120  
Telephone + 81.43.2979222  
Fax + 81.43.2991115

## KOREA

Dresser Korea Inc.  
2107 Kuk Dong Building  
60-1, 3Ka, Choongmu-ro Chung-Ku,  
Seoul, 100705  
Telephone + 82.2.274.0792  
Fax + 82.2.274.0794

## KUWAIT

Dresser  
Middle East Operations,  
10th Floor, Al-Rashed Complex,  
Fahad Salem Street,  
P.O. Box 242, Safat, 13003  
Telephone + 965.9061157  
Fax + 965.3718590

## MALAYSIA

Dresser Flow Solutions  
Business Suite, 19A-9-1, Level 9,  
UOA Centre, n° 19, Jalan Pinang,  
50450 Kuala Lumpur, West Malaysia  
Telephone + 60.3.2163.2322  
Fax + 60.3.2163.6312

## MEXICO

Dresser Valve de Mexico, S.A. de C.V.  
Henry Ford n° 114, Esq. Fulton,  
Fracc. Industrial San Nicolas, 54030 Tlalnepantla,  
Estado de Mexico  
Telephone + 52.5.310.9863  
Fax + 52.5.310.5584

## THE NETHERLANDS

Dresser Valves Europe  
Steenhouwerstraat 11, 3194 AG, Hoogvliet  
Mailing address : P.O. Box 640,  
NL3190 AN Hoogvliet RT  
Telephone + 31.10.438.4122  
Fax + 31.10.438.4443

## NIGERIA

Dresser Flow Solutions  
Plot 293, Akin Olugbade Street  
Victoria Island, Logos, Nigeria  
Telephone + 234.1.555.4229  
Fax + 234.1.555.7969

## RUSSIA

DS Controls  
61, Nekhinskaya Street,  
Veliky Novgorod 173021  
Telephone + 7.8162.157898  
Fax + 7.8162.157921

## SAUDI ARABIA

Dresser Al Rushaid Valve & Instrument CO.  
P.O. Box 10145 - Jubail Industrial City 31961  
Telephone + 966.3.341.0278  
Fax + 966.3.341.0696

## SINGAPORE

Dresser Singapore Pte Ltd.  
16, Tuas Avenue 8 - Singapore 639231  
Telephone + 65.6.861.6100  
Fax + 65.6.861.7172

## SOUTH AFRICA

Dresser Ltd., South Africa Branch  
P.O. Box 2234, 16 Edendale Road Eastleigh,  
Edenvale 1610  
Telephone + 27.11.452.1550  
Fax + 27.11.452.6542

## SPAIN

Masoneilan S.A.  
C/Murcia 39 C, 08030 Sant Boi de Llobregat,  
Barcelona  
Telephone + 34.93.652.6430  
Fax + 34.93.661.6444

## UNITED ARAB EMIRATES

Dresser - Middle East Operations  
P.O. Box 61302, Roundabout 8,  
Units JAO1 & JAO2  
Jebel Ali Free Zone, Dubai  
Telephone + 971.4.8838.752  
Fax + 971.4.8838.038

## UNITED KINGDOM

DI UK Ltd.  
Trevithick Works Gillibrands Estate,  
Skelmersdale, Lancashire WN8 9TU  
Telephone + 44.1695.52600  
Fax + 44.1695.52662

DI UK Ltd.  
Unit 4, Suite 1.1, Nobel House,  
Grand Union Office Park, Packet Boat Lane,  
Uxbridge, Middlesex UB8 2GH  
Telephone + 44.1895.454900  
Fax + 44.1895.454919

## UNITED STATES

Northern Region  
Dresser - Masoneilan  
85 Bodwell Street  
Avon, MA 02322-1190  
Telephone + 1.508.586.4600  
Fax + 1.508.427.8971

Southern Region  
Dresser - Masoneilan  
2135 Highway 6 South  
Houston, TX 77077  
Telephone + 1.281.496.8100  
Toll Free + 1.800.847.1099  
Fax + 1.281.596.4222

South Texas Operations  
Dresser - Masoneilan  
4841 Leopard Street  
Corpus Christi, TX 78408-2621  
Telephone + 1.361.877.2414  
Fax + 1.361.584.1196

Masoneilan Aftermarket  
Sales & Service Center  
16030 Bear Bayou Drive  
Channelview, TX 77530  
Telephone + 1.281.862.1500  
Fax + 1.281.862.1550

Western Region  
Dresser - Masoneilan  
2950 East Birch Street  
Brea, CA 92821  
Telephone + 1.714.572.1528  
Fax + 1.714.572.1463